

SPECIFICATIONS

CONTACT RATING: 1A with resistive load @ 120VAC or 28 VDC.

ELECTRICAL LIFE: 60,000 make-and-break cycles at full load.

CONTACT RESISTANCE: 20MΩ max. initial @ 2.4VDC.100mA

For both coin silver and gold plated contacts.

INSULATION RESISTANCE: 1,000MΩmin.

DIELECTRIC STRENGTH : 1,000V RMS @ sea level.

OPERATING TEMPERATURE: -30°C to 85°C.

MATERIALS

CASE-Diallyl phthalate (DAP)

PLUNGER – Thermoplastic polyester-black.

BUSHING – Brass, nickel plated.

HOUSING – Stainless steel.

TERMINAL SUPPORT- Brass,electro in plated.

CONTACTS-Coin silver,silver plated.

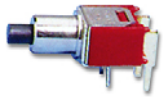
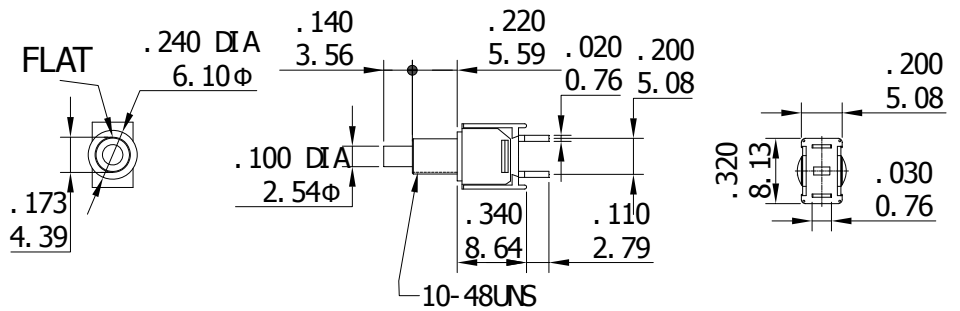
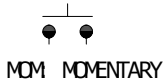
TERMINALS – Brass, silver plated.



SPST

Model NO.	TYPE	
AS-01	OFF	MOM

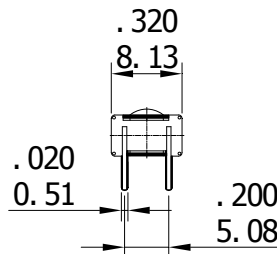
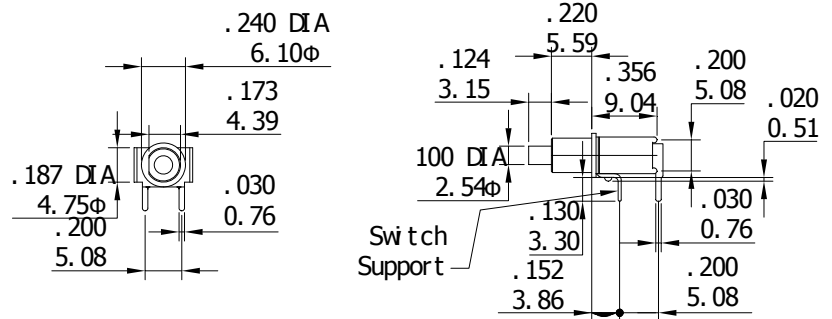
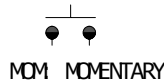
Schemac



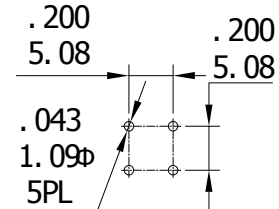
SPST

Model NO.	TYPE	
AS-02	OFF	MOM

Schematic



P. C. MOUNTING

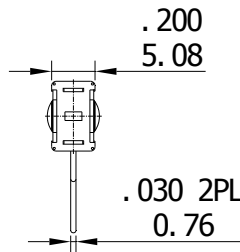
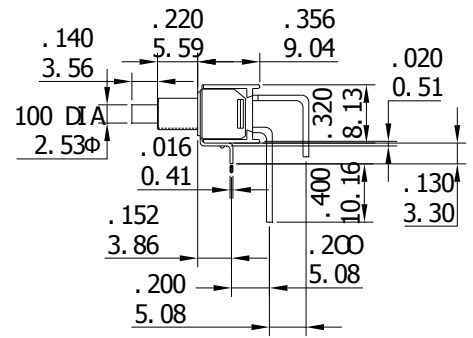
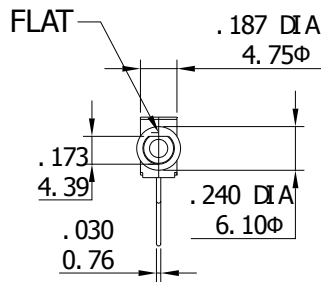
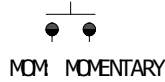




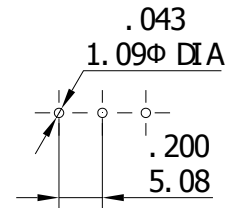
SPST

Model NO.	TYPE	
AS-03	OFF	MOM

Schematic



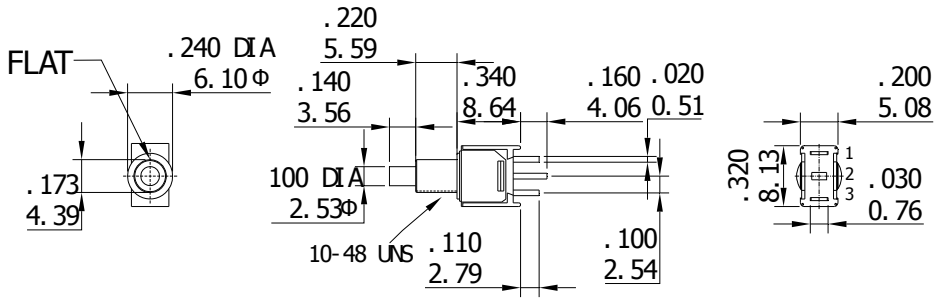
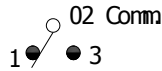
P. C. MOUNTING



SPDT

Model NO.	TYPE	
AS-04	OFF	MOM
Term. Comm.	2-1	2-3

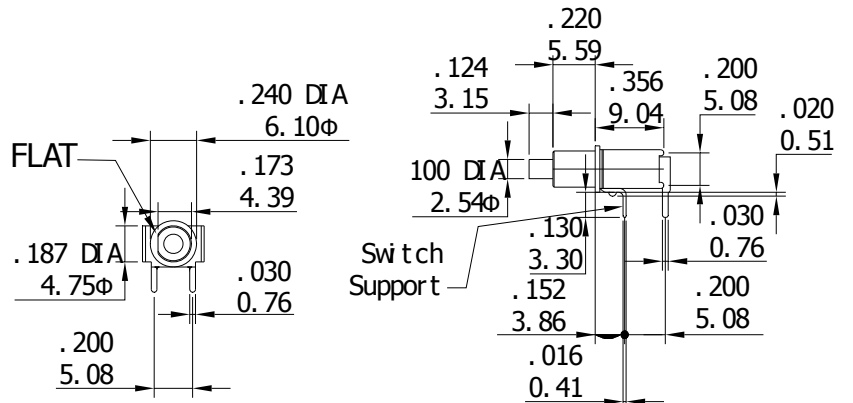
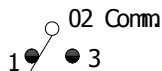
Schematic



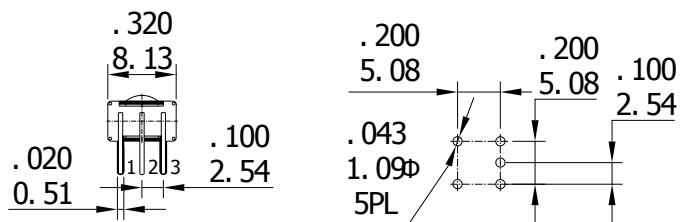
SPDT

Model NO.	TYPE	
AS-05	ON	MOM
Term. Comm.	2-1	2-3

Schematic

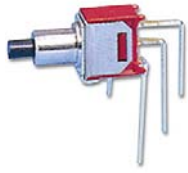


P. C. MOUNTING



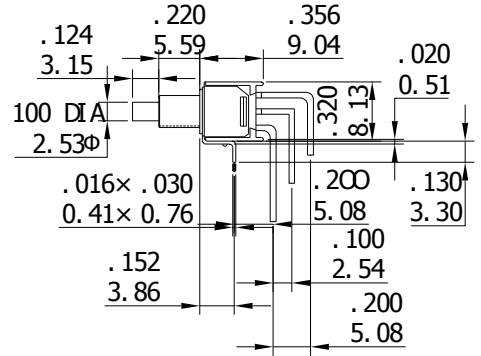
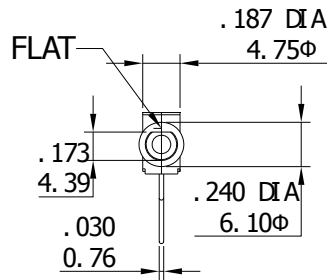
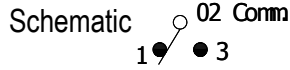
MS700 SERIES

MASSUSE SWITCH

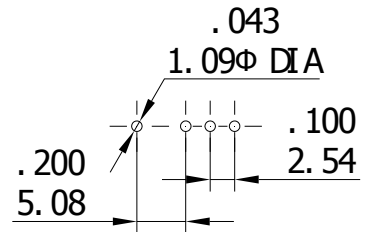
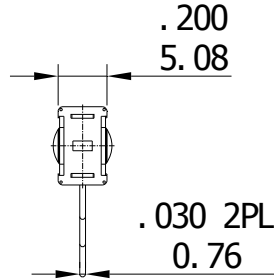


SPDT

Model NO.	TYPE	
AS-06	ON	MOM
Term.	2-1	2-3
Comm.		



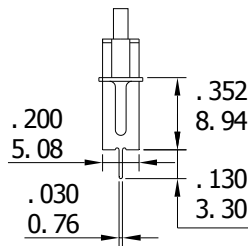
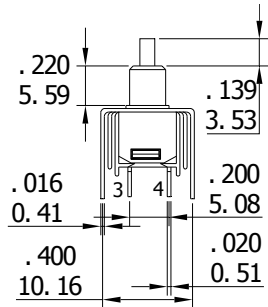
P. C. MOUNTING



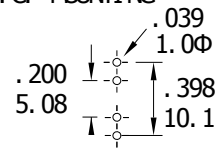
VERTICAL SUPPORT BRACKET OPTIONS



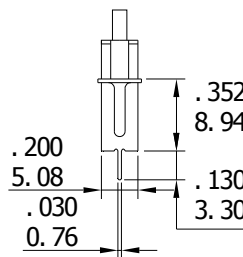
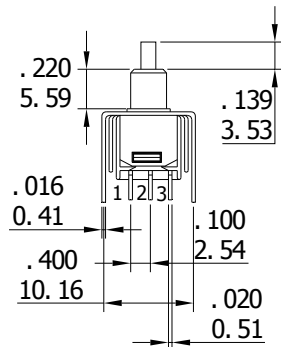
SPST



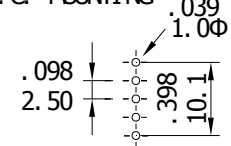
P. C. MOUNTING



SPDT



P. C. MOUNTING



CAPS

