

MASSUSE SOLID STATE RELAY

DC to AC Solid State Relay

MO2002DA

MO2002DA1: Random turn-on MO2002DA2: Zero-cross turn-on

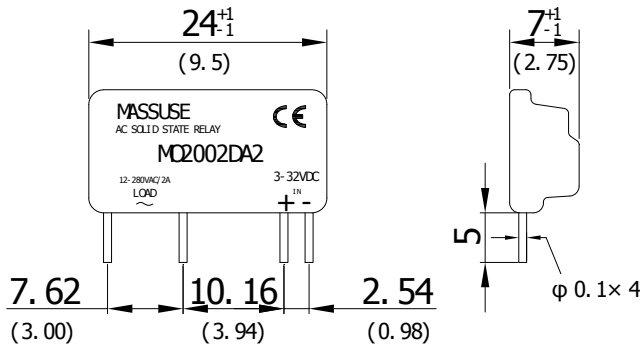
SPECIFICATION

Model No.	Control Voltage Range	Must Turn Off Voltage	Input Impedance	Max. Load Current	Load Voltage Range	Min Blocking Voltage	Max Off-State Leakage	Frequency Range	Max 1-Cycle Peak Surge
MO2002DA	3 to 32VDC	Max. 1.0VDC	1.5Kohm	2A	12 – 280VAC	600VAC	Less 5mA	47 – 70HZ	40A

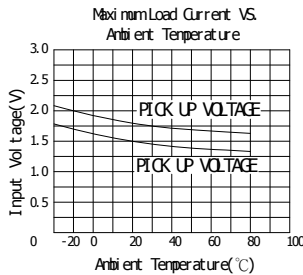
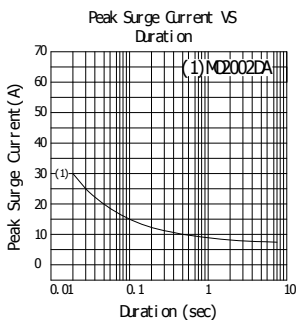
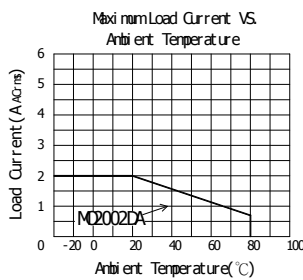
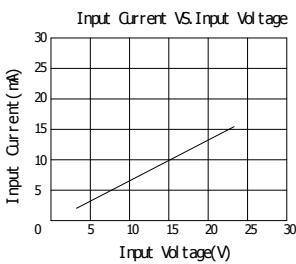
Model No.	Max Off State dv / dt	Max On-State Voltage Drop	Isolate Impedance	Dielectric Strength Input-Output	Dielectric Strength Input, Output - case	Turn On Time	Turn Off Time	Operating Temperature	Weight (g)
MO2002DA	100 V / μ SEC	1.5VAC	10 ⁹ ohm	2500VACrms	-	Less 2mSec	Less 1/2AC cycle	-30°C~+80°C	1.5 g

MO series

Dimensions(unit: mm)



CHARACTERISTIC CURVES



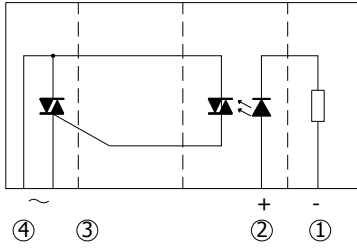
Attention:

In order to be in compliance with the EMC Directive an additional X2 capacitor at the output is required if the SSR is operated as single component. In case the SSR is incorporated in an appliance the existing EMI filter may provide the required EMI suppression. The X2 capacitor must be placed as close as possible to the output terminals. See also above.

MASSUSE SOLID STATE RELAY

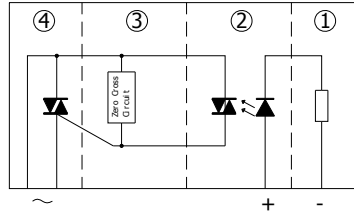
EQUIVALENT CIRCUIT

Random Turn-on



1. INPUT (-)
2. INPUT (+)
3. OUTPUT
4. OUTPUT

Zero Cross Turn-On



1. INPUT CIRCUIT
2. PHOTO DETECTOR
3. ZERO-CROSS CIRCUIT
4. OUTPUT CIRCUIT