

MASSUSE SOLID STATE RELAY

DC to AC Solid State Relay

MA2002DA

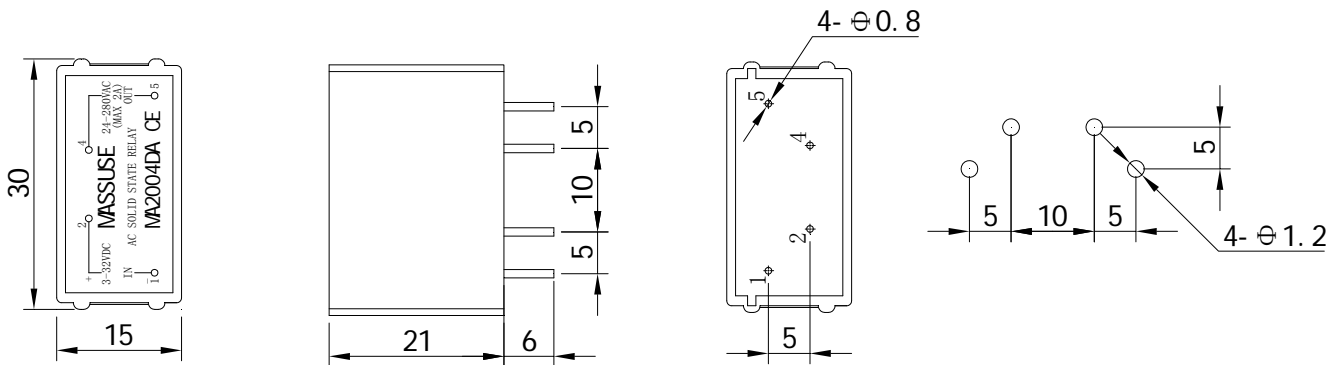
MA2004DA

SPECIFICATION

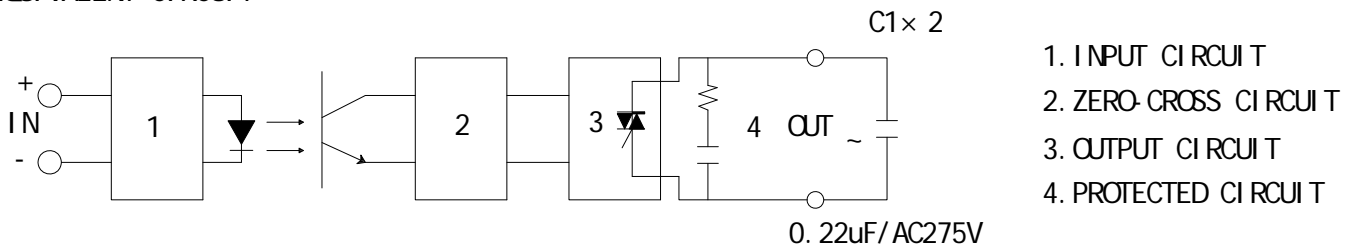
Model No.	Control Voltage Range	Must Turn Off Voltage	Input Impedance	Max. Load Current	Load Voltage Range	Min Blocking Voltage	Max Off-State Leakage	Frequency Range	Max 1-Cycle Peak Surge
MA2002DA	3 to 32VDC	Max. 1.0VDC	1.5Kohm	2A	24 – 280VAC	600VAC	Less 3mA	47 – 70HZ	30A
MA2004DA	3 to 32VDC	Max. 1.0VDC	1.5Kohm	4A	24 – 280VAC	600VAC	Less 3mA	47 – 70HZ	30A

Model No.	Max Off State dv / dt	Max On-State Voltage Drop	Isolate Impedance	Dielectric Strength Input-Output	Dielectric Strength Input, Output - case	Turn On Time	Turn Off Time	Capacitance In-Out	Weight (g)
MA2002DA	100 V / μ SEC	1.5VACrms	10 ⁹ ohm	2500VACrms	-	Less 2msec	Less 1/2AC cycle	Less 15 pf	15 g
MA2004DA	100 V / μ SEC	1.5VACrms	10 ⁹ ohm	2500VACrms	-	Less 2msec	Less 1/2AC cycle	Less 15 pf	15 g

Dimensions(unit: mm)



EQUIVALENT CIRCUIT



1. INPUT CIRCUIT
2. ZERO-CROSS CIRCUIT
3. OUTPUT CIRCUIT
4. PROTECTED CIRCUIT