

# M400 SERIES

# MASSUSE SWITCH

## SPECIFICATIONS

CONTACT RATING: 3A with resistive load @ 120VAC or 28 VDC.

ELECTRICAL LIFE: 50,000 make-and-break cycles at full load.

CONTACT RESISTANCE: 10MΩ max. initial @ 2.4VDC.100mA

For both coin silver and gold plated contacts.

INSULATION RESISTANCE: 1,000MΩmin.

DIELECTRIC STRENGTH : 1,000V RMS @ sea level.

OPERATING TEMPERATURE: -30°C to 85°C.

## MATERIALS

CASE-melamine or diallyl phthalate (DAP)

TOGGLE HANDLE - Brass, chrome plated.

BUSHING – Brass, nickel plated.

HOUSING – Stainless steel.

END CONTACT Coin silver, silver plated.

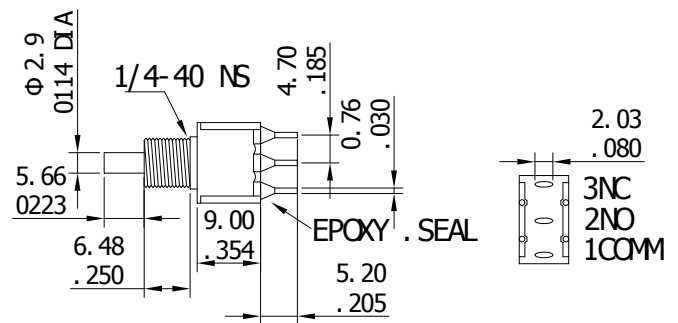
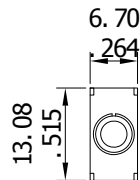
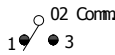
END TERMINAL-Brass, silver plated.

CENTER CONTACT & TERMINAL – Brass, silver plated.



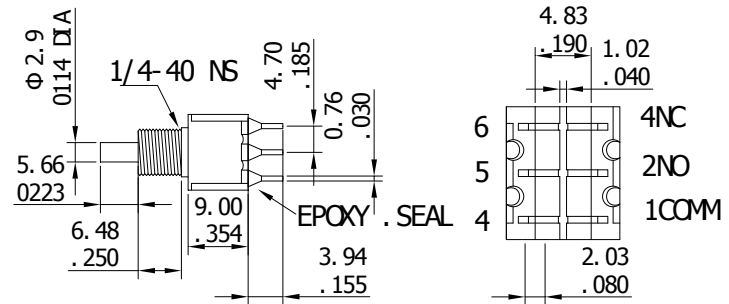
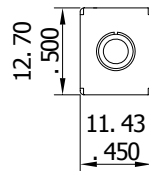
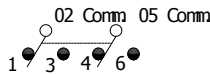
SPDT

Model No.	TYPE	
A101	ON	MON
Term. Comm.	1-3	1-2



DPDT

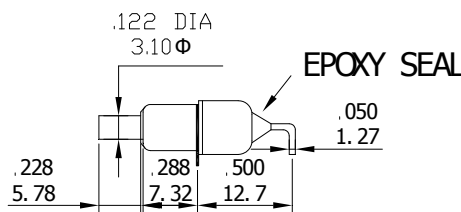
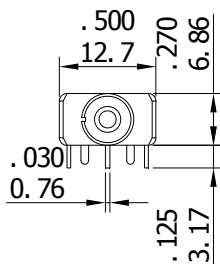
Model No.	TYPE	
A202	ON	MON
Term. Comm.	1-3,4-6	1-2,4-5



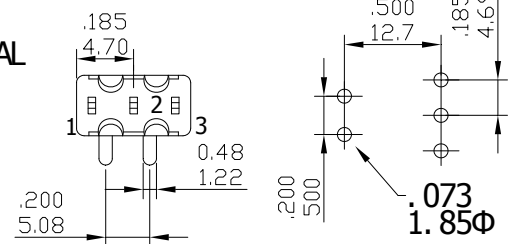
A3



SPDT



COMM N.O. N.C.



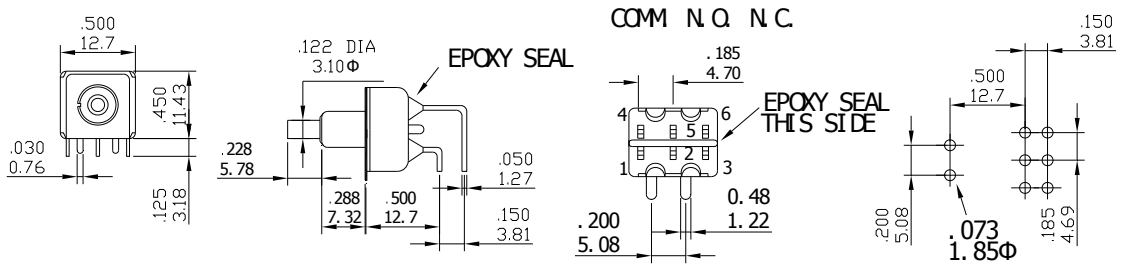
# M400 SERIES

# MASSUSE SWITCH

A4



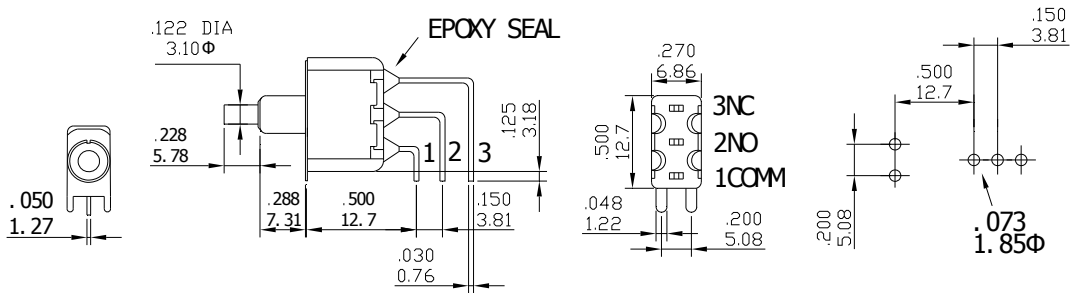
DPDT



A5



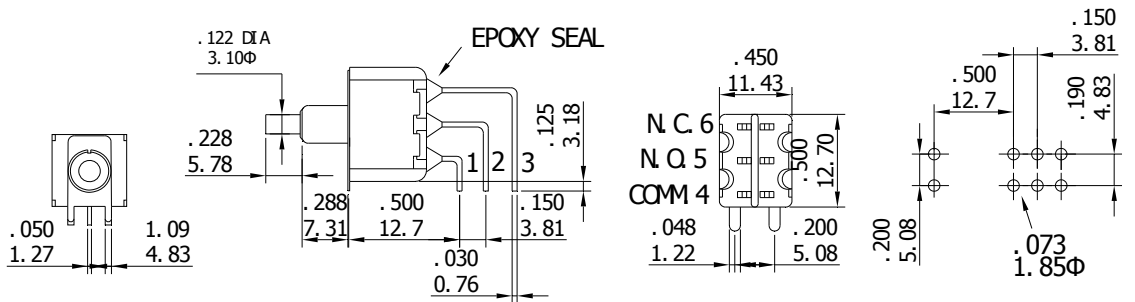
SPDT



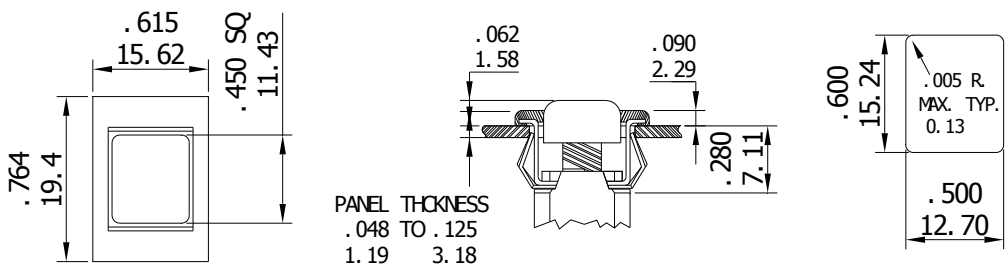
A6



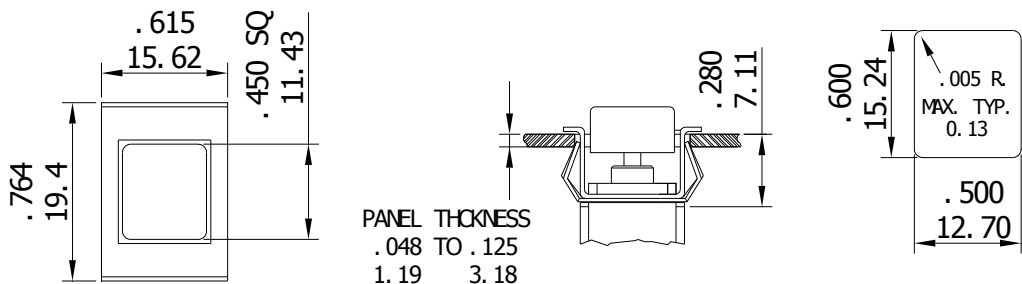
DPDT



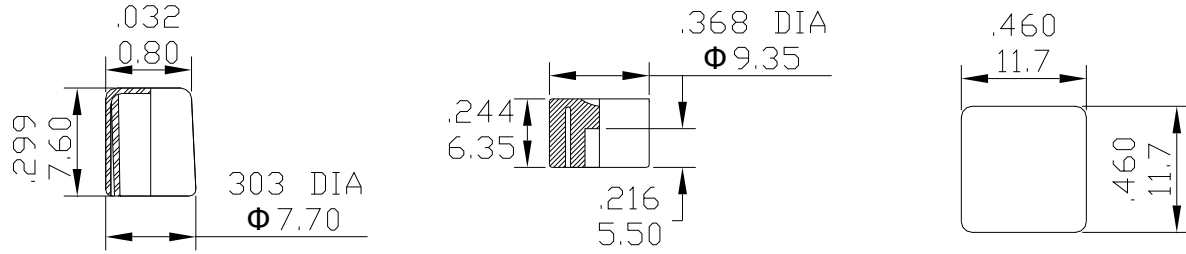
A7



A8

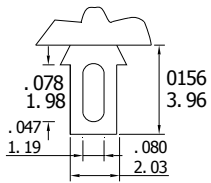


CAPS



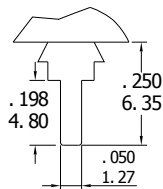
TERMINATION OPTIONS

A1STD



THK .030 (0.76)

A2



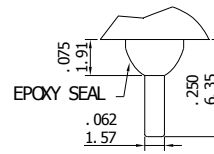
THK .030 (0.76)

A3-E



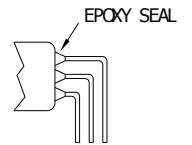
EPOXY SEAL

A4-E



EPOXY SEAL

A5



EPOXY SEAL