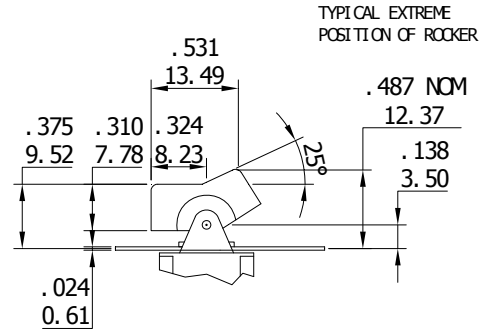
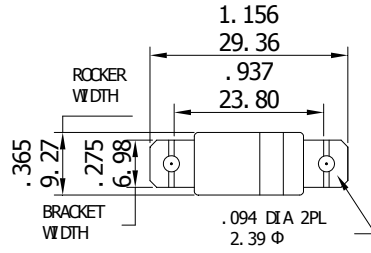
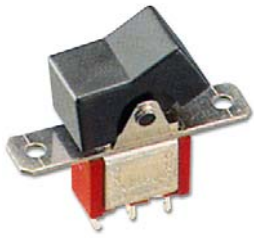
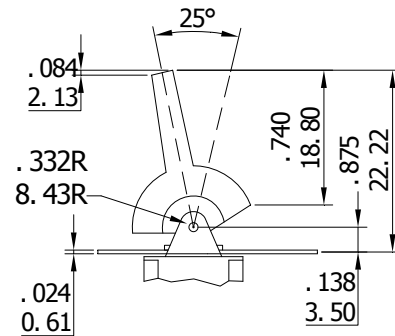
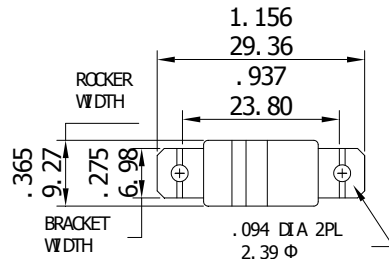


## ACTUATOR OPTIONS

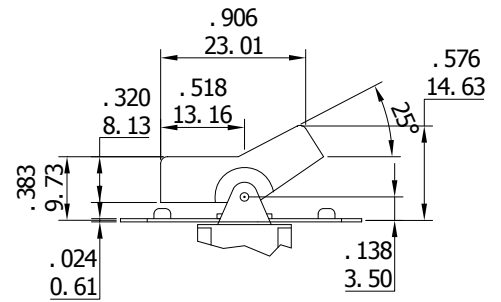
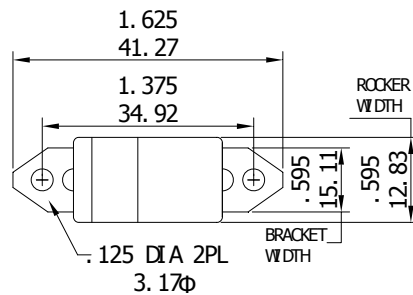
R1



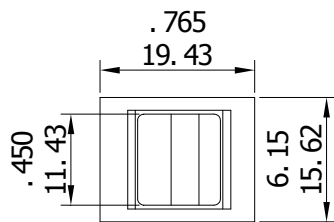
R2



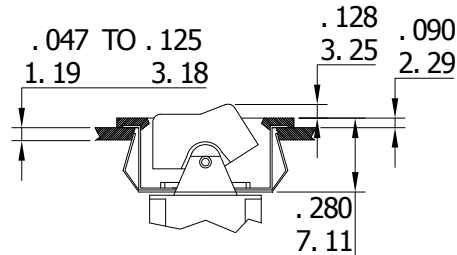
R3



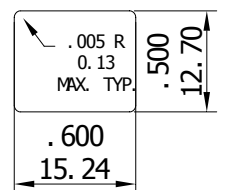
R4



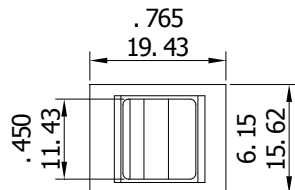
PANEL THICKNESS



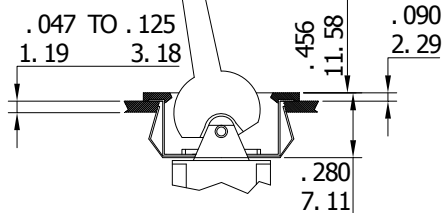
PANEL MOUNTING



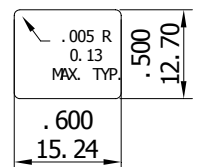
R5



PANEL THICKNESS



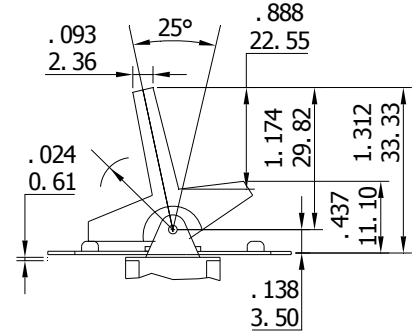
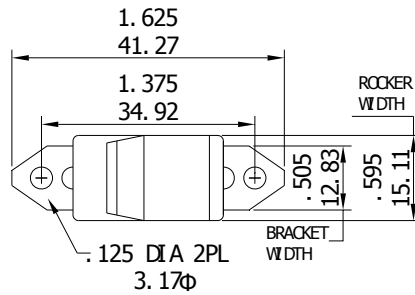
PANEL MOUNTING



# M300 SERIES

# MASSUSE SWITCH

R6



## SPECIFICATIONS

CONTACT RATING: 5A with resistive load @ 120VAC or 28 VDC.

ELECTRICAL LIFE: 50,000 make-and-break cycles at full load.

CONTACT RESISTANCE: 10MΩ max. initial @ 2.4VDC.100mA

For both coin silver and gold plated contacts.

INSULATION RESISTANCE: 1,000MΩmin.

DIELECTRIC STRENGTH : 1,000V RMS @ sea level.

OPERATING TEMPERATURE: -30°C to 85°C.

## MATERIALS

CASE-melamine or diallyl phthalate (DAP)

TOGGLE HANDLE - Brass, chrome plated.

BUSHING – Brass, nickel plated.

HOUSING – Stainless steel.

END CONTACT Coin silver, silver plated.

END TERMINAL-Brass, silver plated.

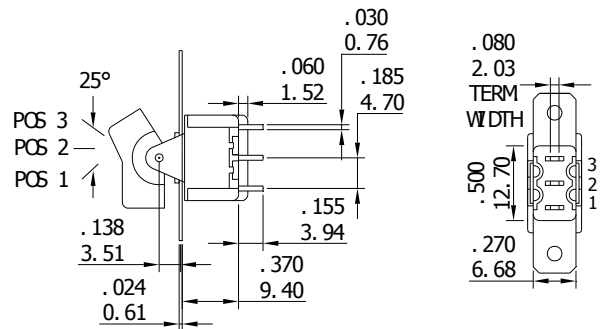
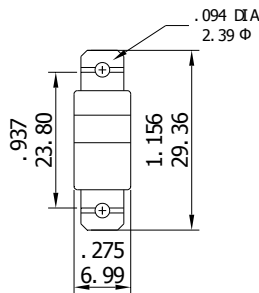
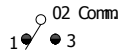
CENTER CONTACT & TERMINAL – Brass, silver plated.



SPDT

Model No.	Switching Position		
R101	ON	NONE	ON
R102	ON	NONE	(ON)
R103	ON	OFF	ON
R104	(ON)	OFF	(ON)
R105	ON	OFF	(ON)
Term.	2-3	OPEN	2-1
Comm..			

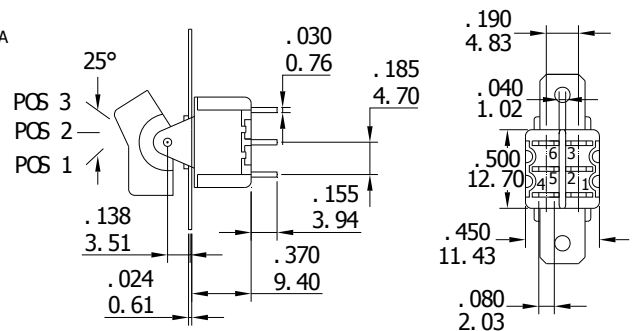
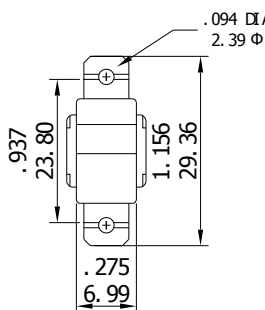
Schematic



DPDT

Model No.	Switching Position		
R201	ON	NONE	ON
R202	ON	NONE	(ON)
R203	ON	OFF	ON
R204	(ON)	OFF	(ON)
R205	ON	OFF	(ON)
Term.	2-3	OPEN	2-1
Comm..	5-6		5-4

Schematic



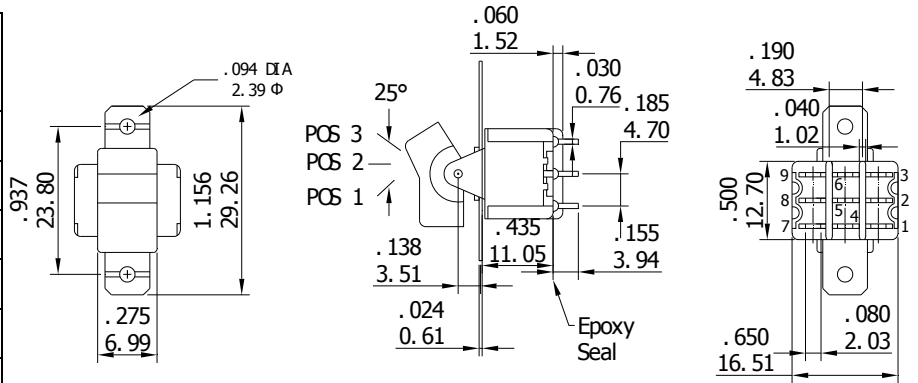
# M300 SERIES

# MASSUSE SWITCH

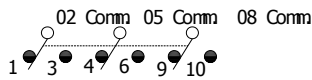


3PDT

Model No.	Switching Position		
	1	2	3
R301	ON	NONE	ON
R302	ON	NONE	(ON)
R303	ON	OFF	ON
R304	(ON)	OFF	(ON)
R305	ON	OFF	(ON)
Term.	2-3,5-6	OPEN	2-1,5-4
Comm..	8-9		8-7

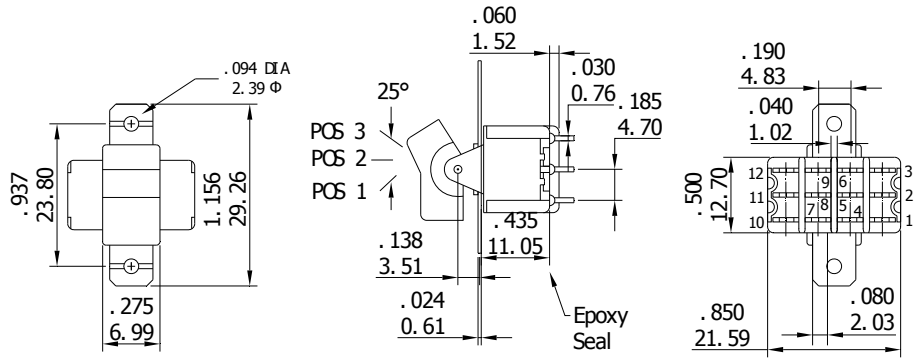


Schematic

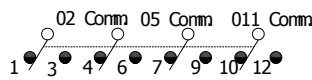


4PDT

Model No.	Switching Position		
	1	2	3
R401	ON	NONE	ON
R402	ON	NONE	(ON)
R403	ON	OFF	ON
R404	(ON)	OFF	(ON)
R405	ON	OFF	(ON)
Term.	2-3,5-6	OPEN	2-1,5-4
Comm..	8-9,11-12		8-7,11-10

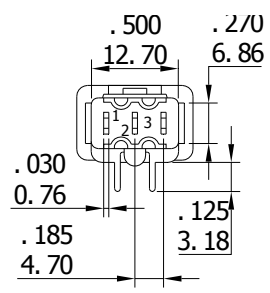
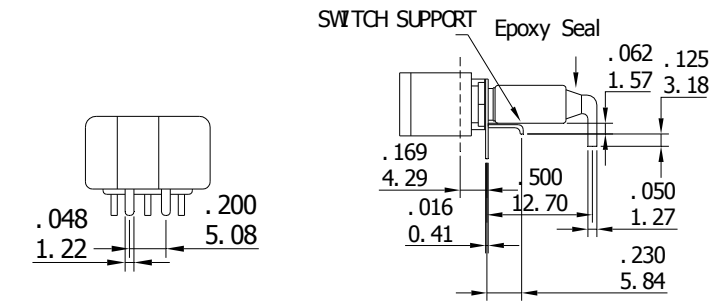


Schematic

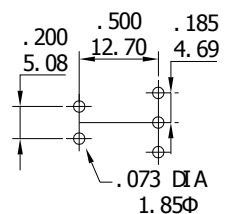


SPDT

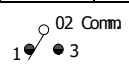
Model No.	Switching Position		
	1	2	3
RM1-1	ON	NONE	ON
RM1-2	ON	NONE	(ON)
RM1-3	ON	OFF	ON
RM1-4	(ON)	OFF	(ON)
RM1-5	ON	OFF	(ON)
Term.	2-3	OPEN	2-1
Comm..			



P.C. MOUNTING



Schematic

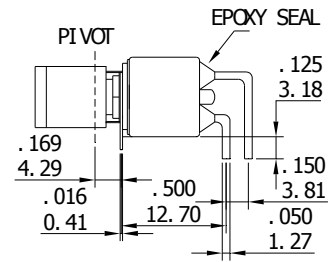
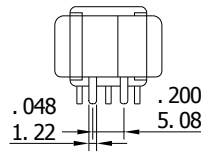
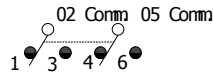




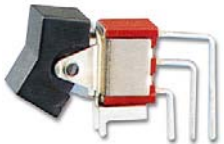
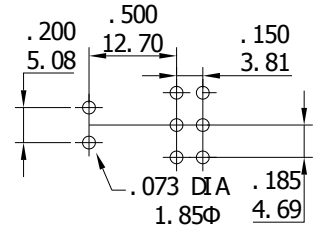
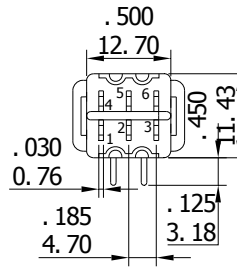
**DPDT**

Model No.	Switching Position		
	ON	NONE	ON
RM2-1	ON	NONE	ON
RM2-2	ON	NONE	(ON)
RM2-3	ON	OFF	ON
RM2-4	(ON)	OFF	(ON)
RM2-5	ON	OFF	(ON)
Term.	2-3	OPEN	2-1
Comm..	5-6		5-4

Schematic



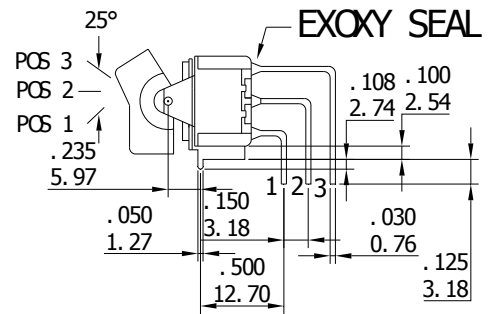
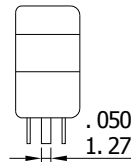
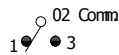
**P. C. MOUNTING**



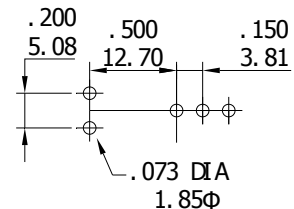
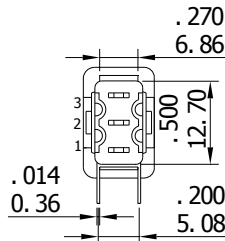
**SPDT**

Model No.	Switching Position		
	ON	NONE	ON
RL1-1	ON	NONE	ON
RL1-2	ON	NONE	(ON)
RL1-3	ON	OFF	ON
RL1-4	(ON)	OFF	(ON)
RL1-5	ON	OFF	(ON)
Term.	2-3	OPEN	2-1
Comm..			

Schematic

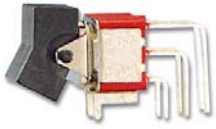


**P. C. MOUNTING**



# M300 SERIES

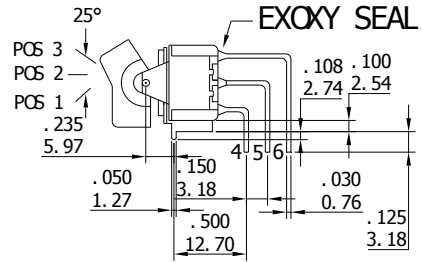
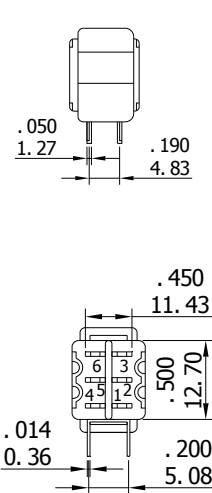
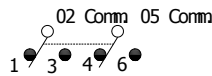
# MASSUSE SWITCH



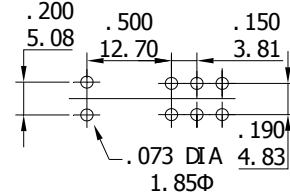
**DPDT**

Model No.	Switching Position		
	ON	NONE	ON
RL2-1	ON	NONE	ON
RL2-2	ON	NONE	(ON)
RL2-3	ON	OFF	ON
RL2-4	(ON)	OFF	(ON)
RL2-5	ON	OFF	(ON)
Term.	2-3	OPEN	2-1
Comm..	5-6		5-4

Schematic



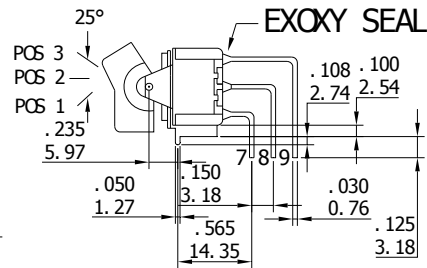
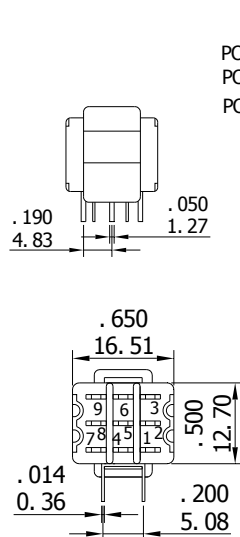
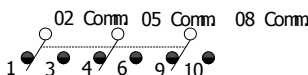
**P. C. MOUNTING**



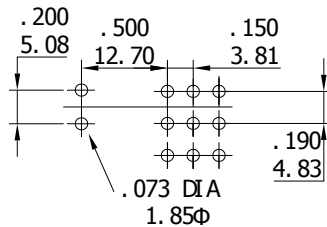
**3PDT**

Model No.	Switching Position		
	ON	NONE	ON
RL3-1	ON	NONE	ON
RL3-2	ON	NONE	(ON)
RL3-3	ON	OFF	ON
RL3-4	(ON)	OFF	(ON)
RL3-5	ON	OFF	(ON)
Term.	2-3,5-6	OPEN	2-1,5-4
Comm..	8-9,11-12		8-7,11-10

Schematic



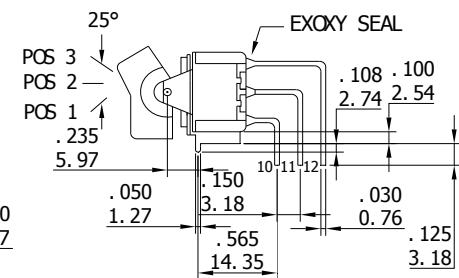
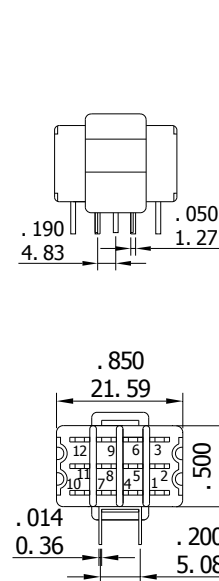
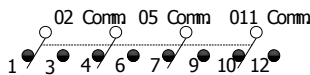
**P. C. MOUNTING**



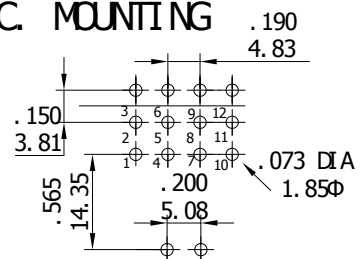
**4PDT**

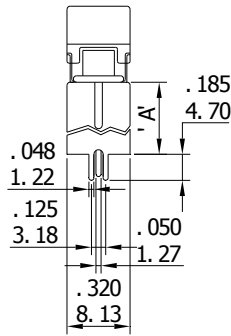
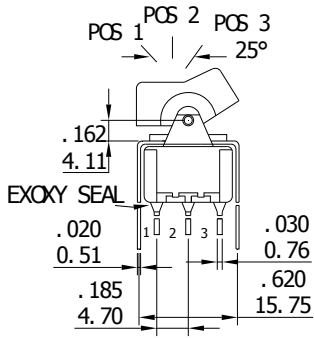
Model No.	Switching Position		
	ON	NONE	ON
RL4-1	ON	NONE	ON
RL4-2	ON	NONE	(ON)
RL4-3	ON	OFF	ON
RL4-4	(ON)	OFF	(ON)
RL4-5	ON	OFF	(ON)
Term.	2-3,5-6	OPEN	2-1,5-4
Comm..	8-9,11-12		8-7,11-10

Schematic

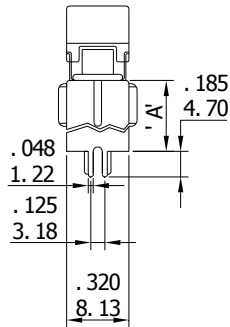
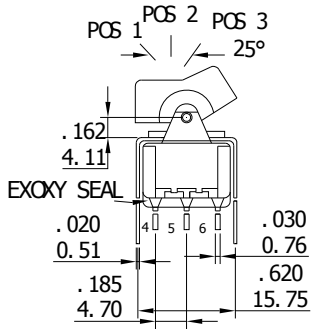
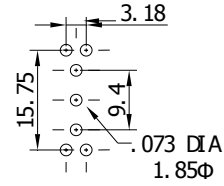


**P. C. MOUNTING**

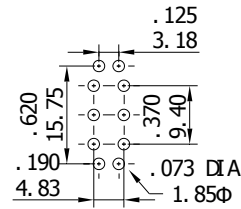




### P. C. MOUNTING



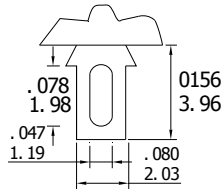
### P. C. MOUNTING



Option CODE	DIM. 'A'
VS2	.460 11.68
VS3	.630 16.00

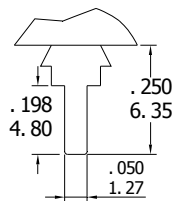
## TERMINATION OPTION

### A1STD



THK .030 (0.76)

### A2

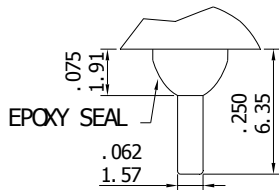


THK .030 (0.76)

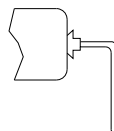
### A3-E



### A4-E



### A5



### A6

