

MASSUSE SOLID STATE RELAY

Solid State Relay

MK0602DD	MK2004DA	MK0602DD-S	MK2004DA-S
MK0604DD	MK4002DA	MK0604DD-S	MK4002DA-S
MK2002DA	MK4004DA	MK2002DA-S	MK4004DA-S

SPECIFICATION

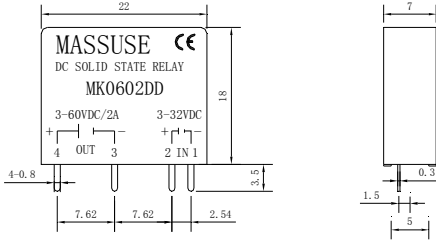
Model No.	Control Voltage Range	Must Turn Off Voltage	Input Impedance	Max. Load Current	Load Voltage Range	Min Blocking Voltage	Max Off-State Leakage	Frequency Range	Max 1-Cycle Peak Surge
MK0602DD MK0602DD-S	3 to 32VDC	Max. 1.0VDC	1.5Kohm	2A	3 – 60VDC	80VDC	Less 1mA	47 – 70HZ	3A
MK0604DD MK0604DD-S	3 to 32VDC	Max. 1.0VDC	1.5Kohm	4A	3 – 60VDC	80VDC	Less 1mA	47 – 70HZ	8.5A
MK2002DA MK2002DA-S	3 to 32VDC	Max. 1.0VDC	1.5Kohm	2A	24 – 280VAC	600VAC	Less 5mA	47 – 70HZ	30A
MK2004DA MK2004DA-S	3 to 32VDC	Max. 1.0VDC	1.5Kohm	4A	24 – 280VAC	600VAC	Less 5mA	47 – 70HZ	50A
MK4002DA MK4002DA-S	3 to 32VDC	Max. 1.0VDC	1.5Kohm	2A	24 – 480VAC	1200VAC	Less 5mA	47 – 70HZ	30A
MK4004DA MK4004DA-S	3 to 32VDC	Max. 1.0VDC	1.5Kohm	4A	24 – 480VAC	1200VAC	Less 5mA	47 – 70HZ	50A

Model No.	Max Off State dv / dt	Max On-State Voltage Drop	Isolate Impedance	Dielectric Strength Input-Output	Dielectric Strength Input, Output - case	Turn On Time	Turn Off Time	Capacitance In-Out	Weight (g)
MK0602DD MK0602DD-S	200 V / μ SEC	1.2Vrms	10 $^{\circ}$ ohm	2500Vrms	_	Less 2msec	Less 1/2 cycle	Less 15 pf	10 g
MK0604DD MK0604DD-S	200 V / μ SEC	1.2Vrms	10 $^{\circ}$ ohm	2500Vrms	_	Less 2msec	Less 1/2 cycle	Less 15 pf	12g
MK2002DA MK2002DA-S	100 V / μ SEC	1.5VAC	10 $^{\circ}$ ohm	4000VACrms	_	Less 2msec	Less 1/2 AC cycle	Less 15 pf	10 g
MK2004DA MK2004DA-S	100 V / μ SEC	2.0VAC	10 $^{\circ}$ ohm	4000VACrms	_	Less 2msec	Less 1/2 AC cycle	Less 15 pf	12g
MK4002DA MK4002DA-S	500 V / μ SEC	2.0VAC	10 $^{\circ}$ ohm	4000VACrms	_	Less 2msec	Less 1/2 AC cycle	Less 15 pf	12g
MK4004DA MK4004DA-S	500 V / μ SEC	2.0VAC	10 $^{\circ}$ ohm	4000VACrms	_	Less 2msec	Less 1/2 AC cycle	Less 15 pf	12g

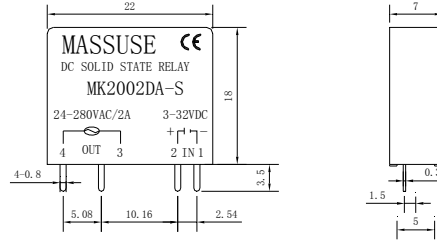
MASSUSE SOLID STATE RELAY

Dimensions(unit: mm) Tolerance:±0.5

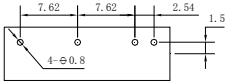
MKXXXXDD/MKXXXXDA



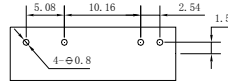
MKXXXXDD-S/MKXXXXDA-S



BOTTOM VIEW

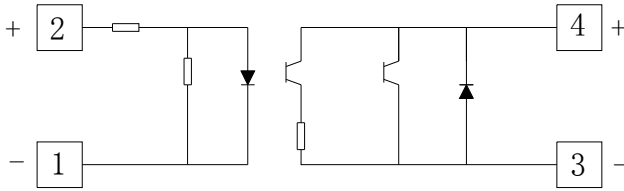


BOTTOM VIEW

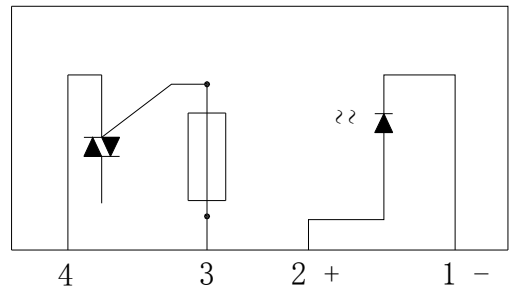


EQUIVALENT CIRCUIT

MKXXXXDD/MKXXXXDD-S



MKXXXXDA/MKXXXXDA-S



CHARACTERISTIC CURVES

