

## FEATURES

- Contact rated load up to 25A
- 1A and 1C configuration

## CONTACT DATA

Contact form	1A, 1C
Contact resistance	30mΩ
Contact rating	1A: 25A/12VDC, 1C: 20A/12VDC
Voltage drop	1A: 20mV/A 1C: 20/25mV/A
Max. switch current	50A
Max. switch voltage	75VDC
Contact Material	Silver Alloy

## CHARACTERISTICS

Insulation resistance	Min. 100MΩ
Dielectric strength	500VAC
Vibration resistance	10 – 13Hz, 1.5mm (Single amplitude 13 – 60Hz, 20m/s <sup>2</sup> )
Operating temperature	- 40°C to + 70°C (no freezing)
Life expectancy	
- Electrical	1 x 10 <sup>5</sup> operations
- Mechanical	1 x 10 <sup>6</sup> operations

## COIL SPECIFICATIONS

Nominal voltage (VDC)	Pick-up voltage (VDC)	Drop-out voltage (VDC)	Coil resistance (Ω±10%)	Power consumption (W)
12	≤ 8.4	≥ 2.4	72	2
24	≤ 16.8	≥ 4.0	288	2

## ORDERING INFORMATION

MEV6

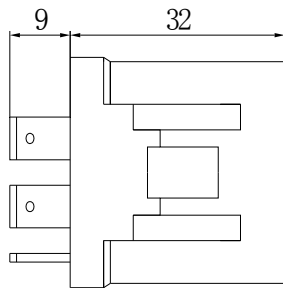
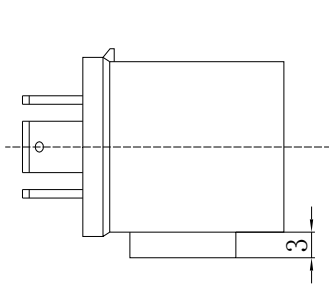
-

012

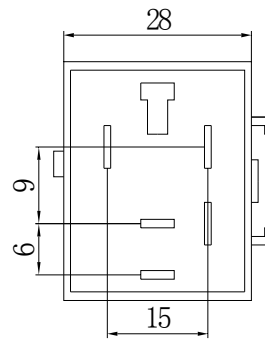
1H

Model No.	Coil Voltage	Contact Form
MEV6	12VDC, 24VDC	1H: 1A 1Z: 1C

DIMENSIONS (unit:mm)



PCB LAYOUT



SCHEMATIC

