

ME-8C

MASSUSE RELAY

FEATURES

- 1A,1C configurations
- Heavy current up to 10A
- Size: 20.1mm×12.7mm×10mm



CONTACT DATA

Contact form	1A, 1C
Contact resistance (Initial)	Max.50mΩ (at 1A / 6VDC)
Rated load	1A:4A 220VAC/30VDC 1C:3A220VAC/30VDC Motor load :5A/14VDC
Max. Carrying current	20A at 20°C within 10 minutes
Max. switching current	1A:10A 1C:7A
Max. switching power	1A: 2200VA/300W 1C: 1540VA/210W
Max. switching voltage	250VAC / 30VDC
Contact material	Silver Alloy

CHARACTERISTICS

Insulation resistance	1000MΩ at 500VDC
Dielectric strength	2000VAC, between coil to contacts 1000VAC, between open contacts
Operate time	≤10 ms
Release time	≤10 ms
Vibration resistance	10-55Hz,1.5mm
Shock resistance	980m/s ²
Humidity	Up to 98% RH AT +40°C
Ambient temperature	- 40°C to + 75°C
Life expectancy	
- Electrical	1 x 10 ⁵ operations
- Mechanical	1 x 10 ⁷ operations

COIL SPECIFICATIONS

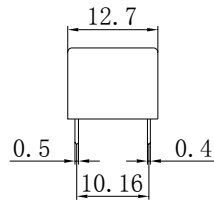
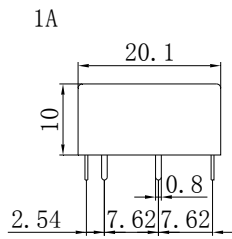
Nominal voltage (VDC)	Pick-up voltage VDC (Max.)	Drop-out voltage VDC (Min.)	Nominal current (mA±10%)	Coil resistance (Ω±10%)	Power consumption(mW)	Max. allowable voltage (VDC)
3	2.1	0.3	66.7	45	200	3.9
5	3.5	0.5	40	125	200	6.5
6	4.2	0.6	33.3	180	200	7.8
9	6.3	0.9	22.2	405	200	11.7
12	8.4	1.2	16.7	720	200	15.6
24	16.8	2.4	8.3	2880	200	31.2

ORDERING INFORMATION

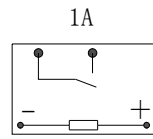
ME-8C - 012 - 1Z S

Model No.	Coil Voltage	Contact Form	Protection
ME-8C	3、5、6、9、12 and 24VDC	1H: 1A 1Z: 1C	S: Sealed

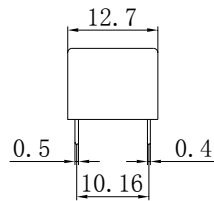
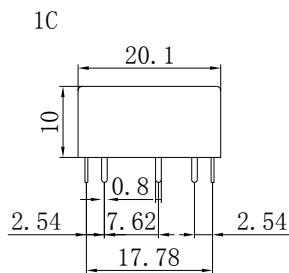
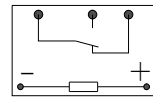
DIMENSIONS(unit: mm)



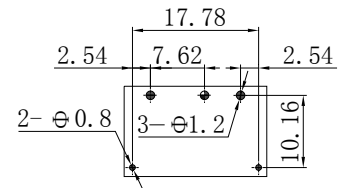
Bottom View



1C



PCB LAYOUT



Disclaimer: All the specifications are subject to change without notice.