

FEATURES

- 0.6-10 A switching capability
- Coil encapsulated technique
- Ideal for sequence control and power switching applications
- Distance for open contacts more than 3mm

CONTACT DATA

Contact form	1CE~4CE/1XE
Contact resistance (Initial)	Max: 100mΩ (at 1A,6VDC)
Contact load Resistive	1A 110VDC 0.6A 220VDC 10A 250VAC
Max. switching power	2500VA132W
Contact Material	Silver Alloy Silver Alloy Gold plated

CHARACTERISTICS

Initial insulation resistance	Min. 100MΩ (at 500VDC)
Dielectric Strength	2500Vrms /Min(50HZ Between) 2000Vrms /Min(50HZ Between)
- Between coil and contacts - Between open contacts	
Operate time(at nomi.Vot)	15ms.
Release time(at nomi.Vot)	15ms.
Temperature rise(at nomi. Vot)	AC type 60°C ,DC type 45°C ,
Ambient temperature	AC:-25°C to+ 55°C DC:-25°C to+ 70°C
Shock resistance	98m/s ² (10G) 980 m/s ² (100G)
- Functional - Destructive	
Ambient humidity	Max. 85% RH
Termination	4.75 x0.5QC terminal 6.35 x0.8QC terminal PCB
Life expectancy	1 x 10 ⁵ operations 1 x 10 ⁷ operations
- Electrical - Mechanical	

1. AC Coils

Nominal voltage(VAC)	Coil resistance (Ω±10%)	Power consumption
6	2.4	4.6W
12	9.5	4.6W
24	38	4.6W
48	150	4.6W
120	970	4.6W
240	3800	4.6W

2.DC Coils

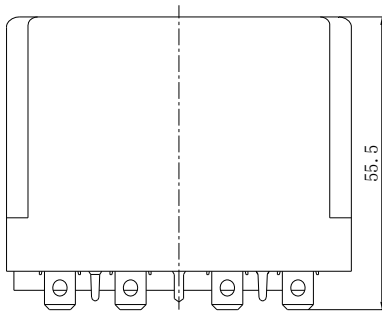
Nominal voltage(VDC)	Coil resistance (Ω±10%)	Power consumption
6VDC	14	2.6W
12VDC	56	2.6W
24VDC	230	2.6W
48VDC	900	2.6W
110VDC	4900	2.6W
220 VDC	19300(16800)	2.6W

ORDERING INFORMATION

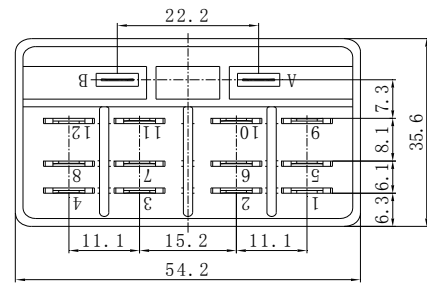
ME-813FE - P - 1 - A 012 - 1Z T F

Model No.	PC or connect	Installation	Coil Source	Coil Voltage	Contact Form	Contact Material	Insulation System
ME-813	Nil: 4.75 x0.5 Connect S: 6.35 x0.8Connect P: PC terminal	1 :No installation 2 :Flank install S :Top install SL:No Cover Install	A:AC D:DC	6VAC—240VAC 6VDC—220VDC	1Z: 1C 2Z:2C 3Z: 3C 4Z:4C 1A:1X 1B:1Y	Nil: Silver Alloy T:Silver Alloy Gold plated	Nil:Class B F:Class F

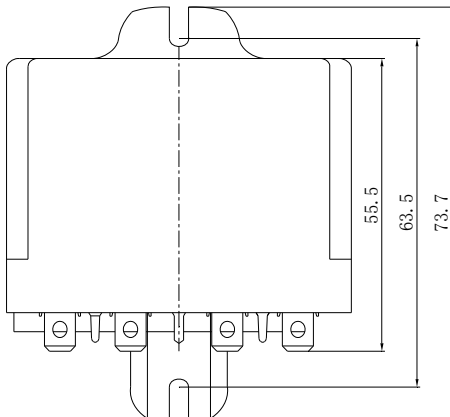
DIMENSIONS(unit :mm)



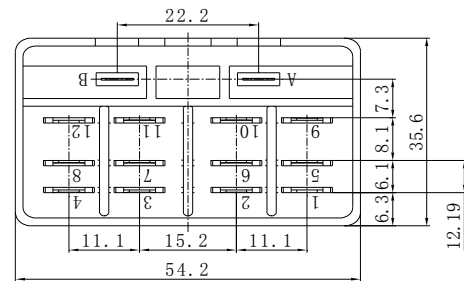
First install fashion



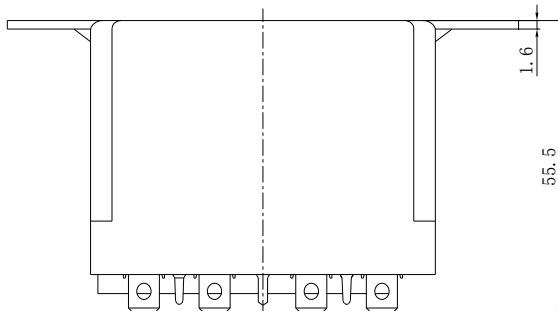
PCB LAYOUT



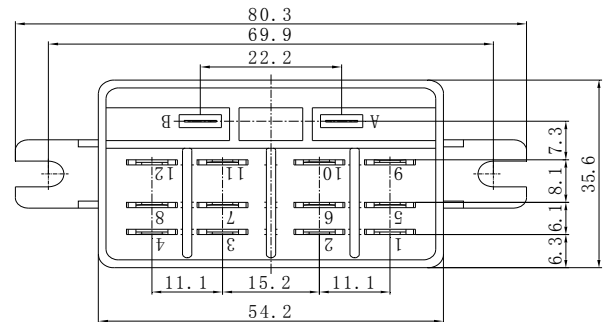
Second install fashion



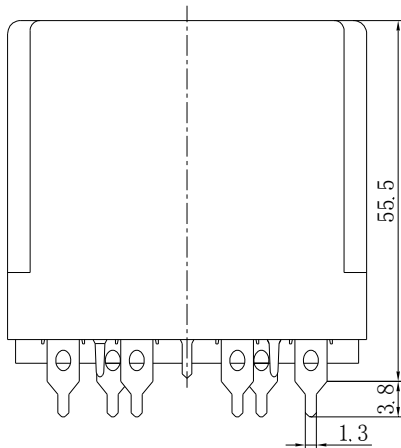
PCB LAYOUT



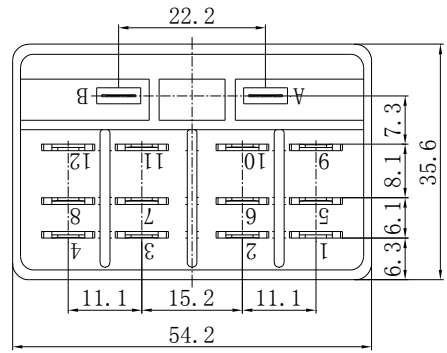
Third install fashion



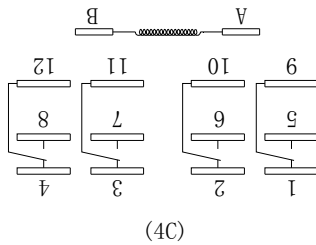
PCB LAYOUT



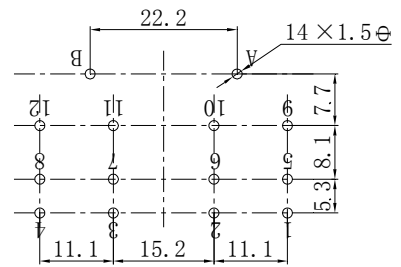
PCB install fashion



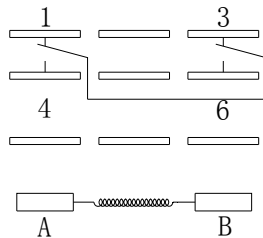
PCB LAYOUT



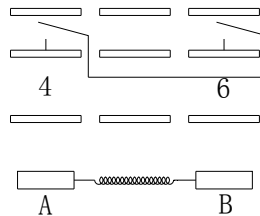
(4C)



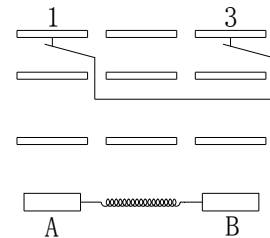
(4C)



1C



1A / 1X



1B / 1Y

Disclaimer: All the specifications are subject to change without notice.