

## FEATURES

- 30A Contact switching capability (Europe:25A)
- Coil encapsulated technique
- Low cost, can edge out the mini contactor
- All plastic use the PPS except the coil,  
It has high quality machine and electric performance.

## CONTACT DATA

Contact form	3A,3B,3C,
Contact resistance (Initial)	Max: 100mΩ(at 1A,6VDC)
Contact load Resistance	30Amp 300VAC,80%PF 15Amp 600VAC, 80%PF 30Amp 28VDC, 1HP 120VAC1HP 120VAC, 2HP 240/277VAC;100000 cycles 3HP 480VAC;100000 cycles 3HP 600VAC;100000 cycles 20Amp 480VAC/277VAC ballast;6000cycles 30Amp 277VAC resistive;100000cycles 18Amp 480VAC resistive;250000cycles 15Amp600VACresistive;250000cycles 100LRA,30FLA 240/277VAC;100000 cycles 50LRA,20FLA 600VAC;100000 cycles
Max. switching voltage	600VAC
Max. switching current	30A 35% to 85% RH
Max. switching power	9000VA 840W
Contact Material	Silver Alloy Silver Alloy Goad Plated

## CHARACTERISTICS

Initial insulation resistance	Min. 100MΩ (at 500VDC)
Dielectric Strength	
- Between coil to contacts	3750Vrms (50HZ)
- Between open contacts	2200Vrms (50HZ)
Operate time(at nomi.Vot)	15ms.
Release time(at nomi.Vot)	15ms.
Temperature rise(nominal voltage)	AC type 60°C ,DC type 45°C ,
Ambient temperature	AC Type: -25°C to 55°C DC Type: -25°C o 70°C
Shock resistance	
- Functional	98m/s <sup>2</sup> (10G)
- Destructive	980 m/s <sup>2</sup> (100G)
Ambient humidity	35% to 85% RH
Termination	6.35 x0.8Q.C. Terminal PCB 4.75 x0.5Q.C. terminal PCB
Life expectancy	
- Electrical	1 x 10 <sup>5</sup> operations
- Mechanical	1 x 10 <sup>7</sup> operations

## COIL SPECIFICATION

### 1. AC Coils

Nominal voltage(VAC)	Coil resistance (Ω±10%)	Power consumption
6 VAC	2.4	4.6VA
12 VAC	9.5	4.6VA
24 VAC	38	4.6VA
48 VAC	150	4.6VA
120 VAC	970	4.6VA
240 VAC	3800	4.6VA

### 2.DC Coils

Nominal voltage(VDC)	Coil resistance (Ω±10%)	Power consumption
6VDC	14	2.6W
12VDC	56	2.6W
24VDC	230	2.6W
48VDC	900	2.6W
110VDC	4900	2.6W
220 VDC	19300(16800)	2.6W

# ME-813FD

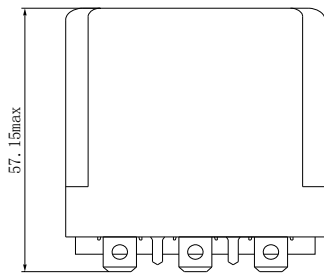
# MASSUSE RELAY

## ORDERING INFORMATION

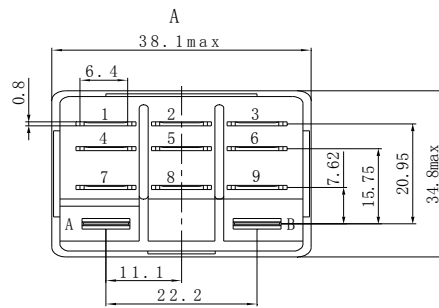
ME-813FD - P - 2 - A 012 - 3H T

Model No.	PC or Connect	Installation	Coil Source	Coil Voltage	Contact Form	Contact Material
ME-813FD	Nil: 4.75 x0.5 Connect S: 6.35 x0.8 Connect P: PC terminal	1:No installation 2:Flank Install 3:Top Install S: Bolt Install SL: No Cover Install	A:AC Nil: DC	6VAC-240VAC 6VDC-220VDC	3H:3A, 3B:3B 3Z:3C	Nil: Silver Alloy T: Silver Alloy Gold plated

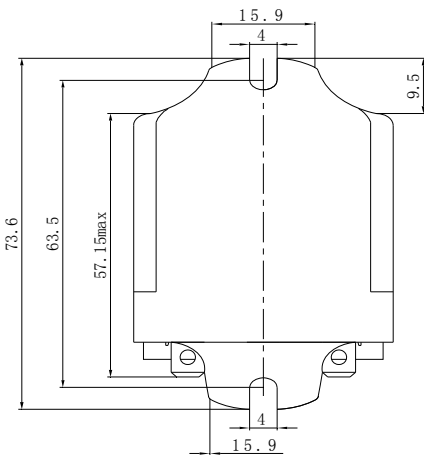
## DIMENSIONS (unit : mm)



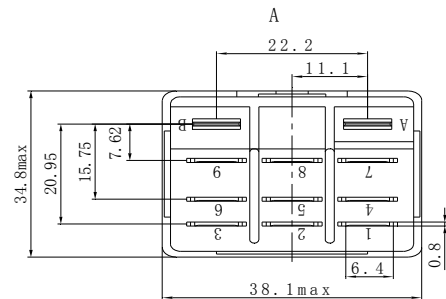
First install fashion



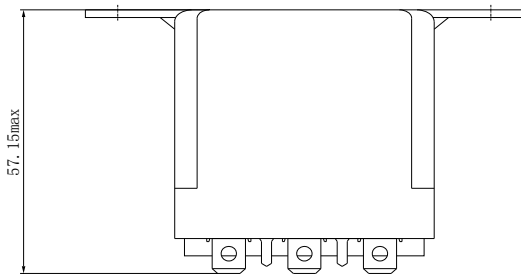
PCB LAYOUT



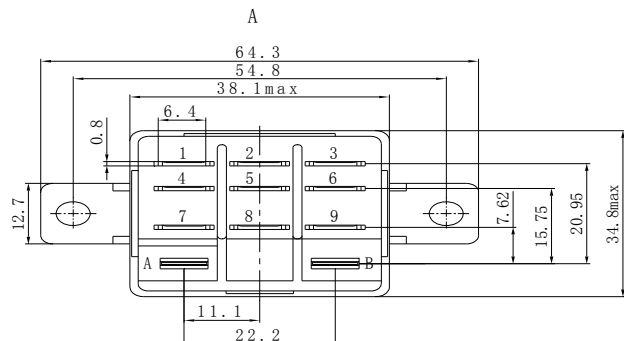
Second install fashion



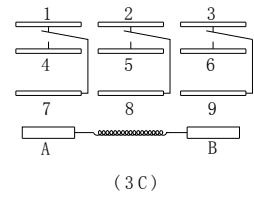
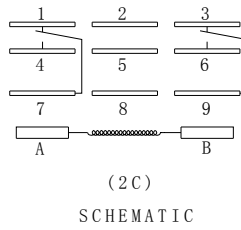
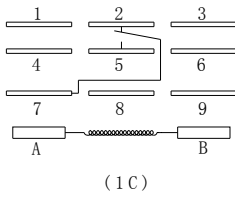
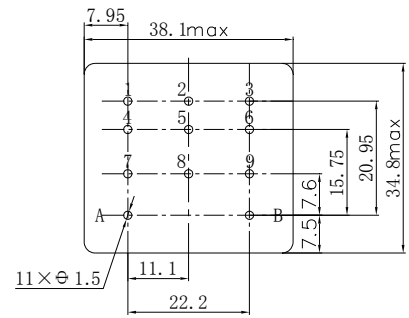
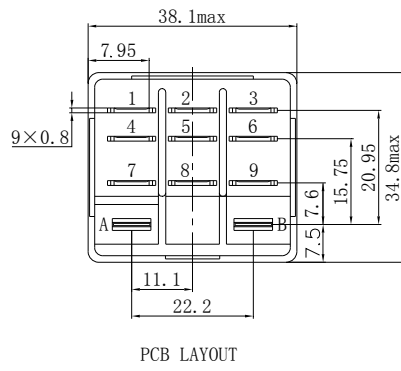
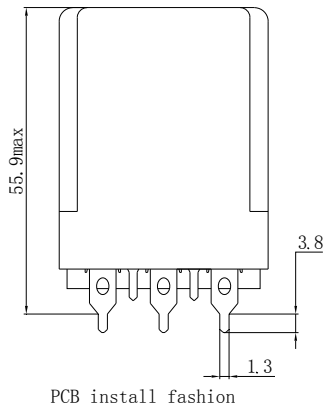
PCB LAYOUT



Third install fashion



PCB LAYOUT



Disclaimer: All the specifications are subject to change without notice.