

FEATURES

- 35A Contact switching capability
- Coil encapsulated technique
- Low cost, can edge out the mini contactor

CONTACT DATA

Contact form	1A,1B,1C,2A,2B,2C,
Contact resistance (Initial)	Max: 100mΩ(at 1A,6VDC)
Contact load (Resistance)	35Amp 277VAC, 30Amp 300VAC 15Amp 600VAC, 25Amp 28VDC 1HP 120VAC, 2HP 240/277VAC 3HP 480VAC 17FLA, 60LRA 300VAC 25FLA, 125LRA 240/277VAC 35FLA, 100LRA 240/277VAC Heavy pilot duty, 600VAC 20Amp 277VAC Ballast 20Amp 480VAC BALLAST
Max.switching voltage	600VAC
Max.switching current	35A
Max.switching power	9695VA 700W
Contact Material	Silver Alloy Silver Alloy Gold Plated

CHARACTERISTICS

Initial insulation resistance	Min. 100MΩ (at 500VDC)
Dielectric Strength	
- Between coil to contacts	2200Vrms (50HZ)
- Between open contacts	1200Vrms (50HZ)
Operate time(at nomi.Vot)	15ms.
Release time(at nomi.Vot)	15ms.
Temperature rise(nominal voltage)	AC type 60°C,DC type 45°C,
Ambient temperature	AC Type: -25°C to 55°C DC Type: -25°C o 70°C
Shock resistance	
- Functional	98m/s ² (10G)
- Destructive	980 m/s ² (100G)
Ambient humidity	35% to 85% RH
Termination	6.35 x0.8Q.C. Terminal PCB 4.75 x0.5Q.C. terminal PCB
Life expectancy	
- Electrical	1 x 10 ⁵ operations
- Mechanical	1 x 10 ⁷ operations

COIL SPECIFICATION

1. AC Coils

Nominal voltage(VAC)	Coil resistance (Ω±10%)	Power consumption
6 VAC	3.5	2.4VA
12 VAC	14	2.4 VA
24 VAC	56	2.4 VA
48 VAC	230	2.4 VA
120 VAC	1500	2.4 VA
240 VAC	6000	2.4 VA

2.DC Coils

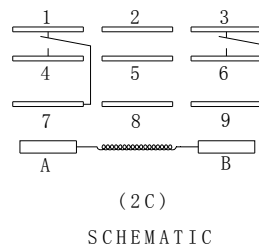
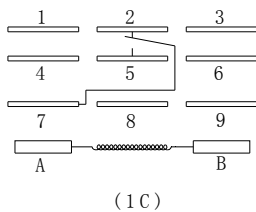
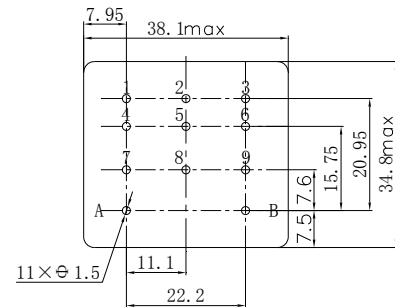
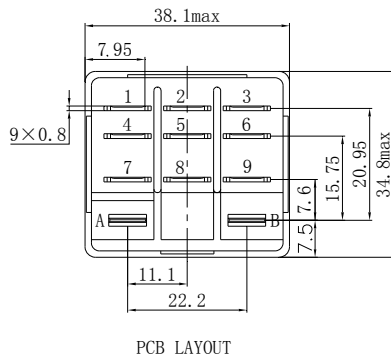
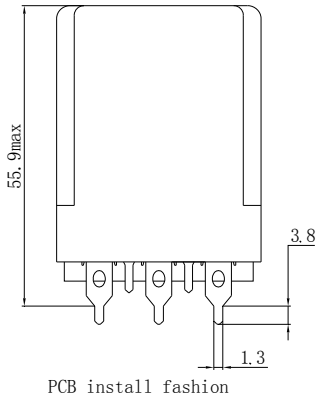
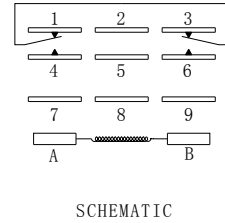
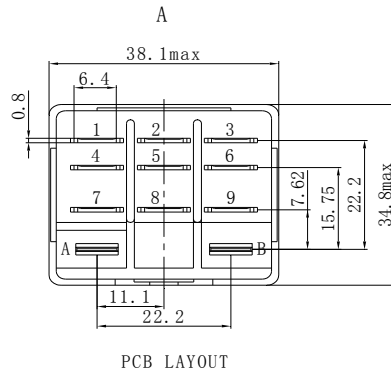
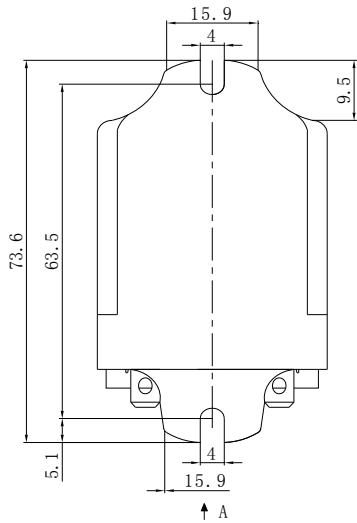
Nominal voltage(VDC)	Coil resistance (Ω±10%)	Power consumption
6VDC	20	1.8W
12VDC	80	1.8W
24VDC	315	1.8W
48VDC	1300	1.8W
110VDC	6800	1.8W

ORDERING INFORMATION

ME-813FC - P - 2 - A 012 - 1H T

Model No.	PC or Connect	Installation	Coil Source	Coil Voltage	Contact Form	Contact Material
ME-813FC	Nil: 6.35 x0.8 Connect P: PC terminal	1:No installation 2:Flank Install 3:Top Install S: Bolt Install	A:AC Nil: DC	6VAC-240VAC 6VDC-110VDC	1H:1A,1D:1B 1Z:1C, 2H:2A 2D:2B, 2Z:2C	Nil: Silver Alloy T: Silver Alloy Gold plated

DIMENSIONS (unit : mm)



Disclaimer: All the specifications are subject to change without notice.