

## FEATURES

- Insulation step: F
- Coil encapsulated technique
- The inimitable gap bit fixation equipment

## CONTACT DATA

Contact form	1A,1B,1C,2A,2B,2C, 3A ,3B,3C
Contact resistance (Initial)	Max: 100mΩ (at 1A,6VDC)
Contact load Resistance	5Amp 1/8HP 120VAC 5Amp 1/4HP 277VAC 2Amp 600VAC,5Amp 28VDC 10Amp 1/3HP 120VAC 10Amp 1/2HP 277VAC 5Amp/10Amp at 28VDC 1HP at 277VAC- 3 phase 3 Amp or 1/2HP at 600VAC 12FLA,35LRA at 15VAC 15Amp or 1/2HP at 120VAC/ 28VDC 15Amp or 1HP at 277VA/ 28VDC
Max.switching voltage	277VAC
Max.switching current	15A
Max.switching capacity	4155VA 420W
Contact Material	Silver Alloy Silver Alloy Gold plated

## CHARACTERISTICS

Initial insulation resistance	Min. 100MΩ (at 500VDC)
Dielectric Strength	
- Between coil to contacts	2200Vrms (50HZ)
- Between open contacts	800Vrms (50HZ)
Operate time(at nomi.Vot)	15ms.
Release time(at nomi.Vot)	15ms.
Temperature rise(nomi vot)	AC type 60°C , DC type 45°C ,
Ambient temperature	AC Type: -25°C to55°C DC Type: -25°C to 70°C
Shock resistance	
- Functional	98m/s <sup>2</sup> (10G)
- Destructive	980 m/s <sup>2</sup> (100G)
Ambient humidity	35% to 85% RH
Termination	4.75 x0.5Q.C. terminal PCB 6.35 x0.8Q.C.terminal PCB
Life expectancy	
- Electrical	1 x 10 <sup>5</sup> operations
- Mechanical	1 x 10 <sup>7</sup> operations

## COIL SPECIFICATION

### 1. AC Coils

Nominal voltage(VAC)	Coil resistance (Ω±10%)	Power consumption
6 VAC	4.5	2.2VA
12 VAC	18	2.2 VA
24 VAC	72	2.2 VA
48 VAC	285	2.2 VA
120 VAC	1800	2.2 VA
240 VAC	7200	2.2 VA

### 2.DC Coils

Nominal voltage(VDC)	Coil resistance (Ω±10%)	Power consumption
6VDC	24	1.5W
12VDC	96	1.5W
24VDC	375	1.5W
48VDC	1500	1.5W
110VDC	8000	1.5W

# ME-813FB

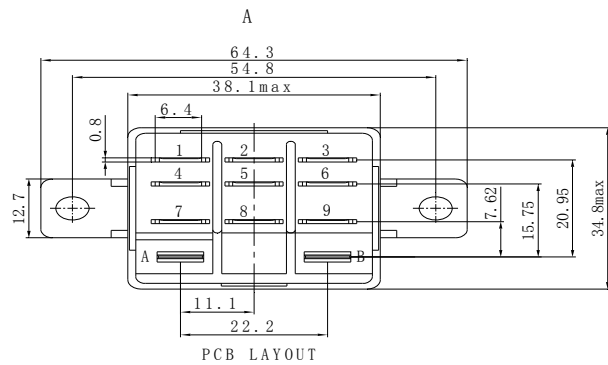
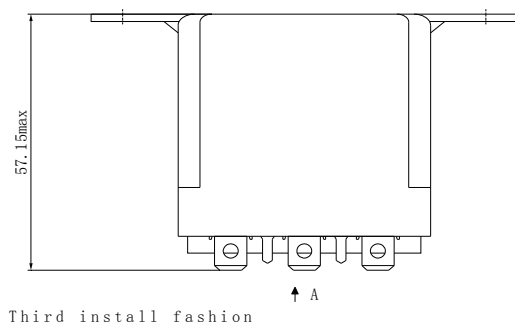
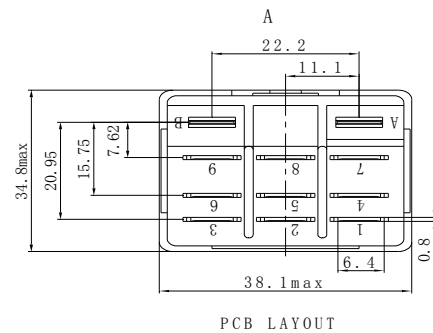
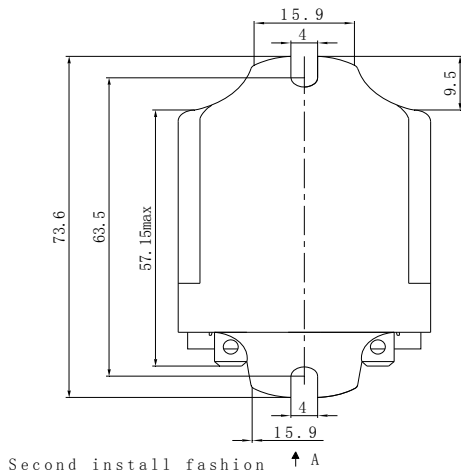
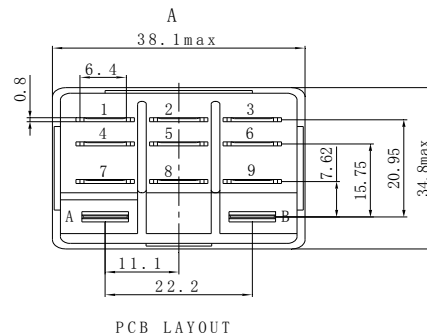
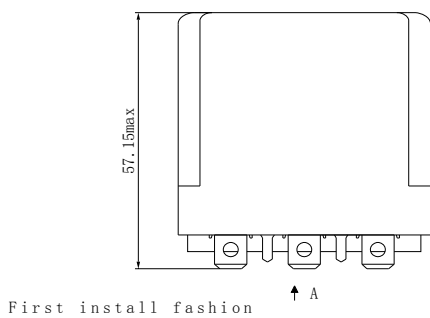
# MASSUSE RELAY

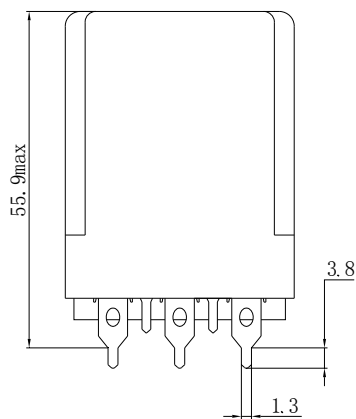
## ORDERING INFORMATION

ME-813FB - P - 2 - A 012 - 3Z T

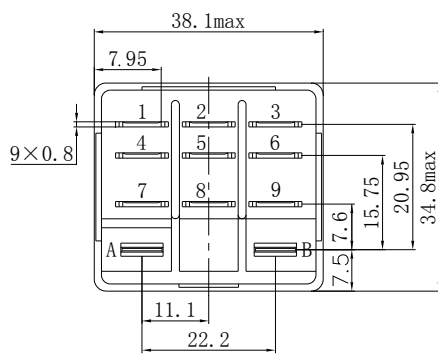
Model No.	PC or Connect	Installation	Coil Source	Coil Voltage	Contact Form	Contact Material
ME-813FB	Nil: 4.75 x0.5 Connect S: 6.35 x0.8 Connect P: PC terminal	1:No installation 2:Flank Install 3:Top Install S: Bolt Install SL:No Cover Install	A:AC Nil:DC	6VAC-240VAC 6VDC-110VDC	1H:1A,1D:1B 1Z:1C, 2H:2A 2D:2B, 2Z:2C 3H:3A, 3D:3B 3Z:3C	Nil: Silver Alloy T: Silver Alloy Gold plated

## DIMENSIONS (unit: mm)

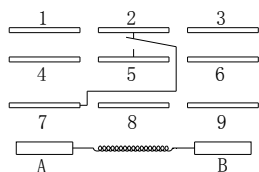
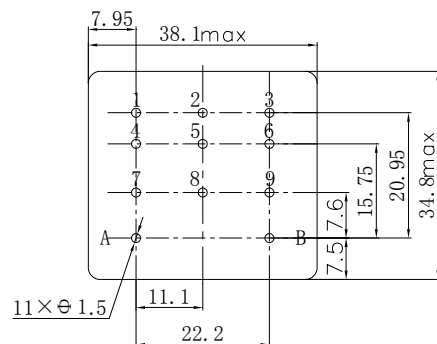




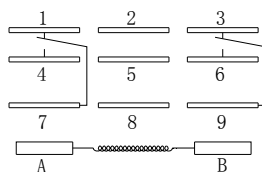
PCB install fashion



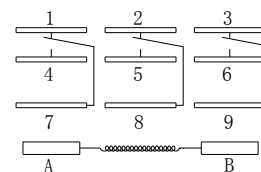
PCB LAYOUT



(1C)



(2C)



(3C)

SCHEMATIC