

FEATURE

- 1A-NO and 1C configurations
- Maximum switching current : 10A
- Dust cover and sealed type available
- UL & CUL Approval File No.: E179937

CONTACT DATA

Contact form	1A ; 1C
Contact resistance (Initial)	$\leq 50\text{m}\Omega$
Contact rating (Resistive)	5A, 10A/125VAC, 28VDC
Max. switching voltage	30VDC 220VAC
Max. switching current	10A
Max. switching power	280W 1250VA
Contact material	Silver Alloy

CHARACTERISTICS

Insulation resistance	250M Ω min (at 500VDC)
Dielectric strength	
Between coil to contacts	50Hz 2000V 1 min.
Between open cointacts	50Hz 750V 1 min.
Surge voltage between contacts and coil	4kV
Operate time	≤ 10 ms
Release time	≤ 5 ms
Vibration resistance	10-55Hz at double amplitude 1.5mm
Shock resistance	100m/s ²
Humidity	85% (at 40°C)
Ambient temperature	- 25°C to + 70°C
Life expectancy	
- Electrical	10 ⁵
- Mechanical	10 ⁷

COIL SPECIFICATIONS

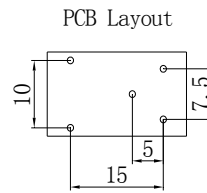
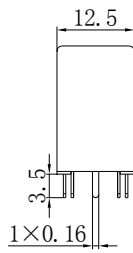
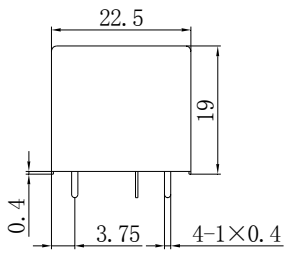
Nominal voltage (VDC)	Pick-up voltage (VDC)	Drop-out voltage (VDC)	Nominal current (mA \pm 10%)	Coil resistance (Ω \pm 10%)	Power consumption (W)
6	4.2	0.6	60	100	0.36
12	8.4	1.2	30	400	0.36
24	16.8	2.4	15	1600	0.36

ORDERING INFORMATION

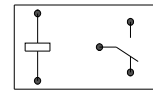
ME-36 - 012 - H S 5

Model No.	Coil Voltage	Contact Form	Protection	Contact Current
ME-36	6VDC – 24VDC	H: 1A Z: 1C	Nil: Dust Cover S: Sealed	5: 5A 10: 10A

Dimensions(unit:mm)



Schematic



Disclaimer: All the specifications are subject to change without notice.