

## FEATURES

- Ultra-miniature
- High capacity type (16A) is available
- Low power consumption : 200mW 16A
- Insulation for high temperature operation: Class B
- UL & CUL File No. E179936
- TÜV File No. R50381463

## CONTACT DATA

Contact form	1A, 1C
Contact resistance (Initial)	Max. 100mΩ (1A 6VDC)
Contact rating -Standard: -High capacity: Inductive load	10A 250VAC/30VDC 16A 250VAC/30VDC 8A 250VAC CosΦ=0.4 TV-5 125VAC
Switching power -Standard: -High capacity:	Max. 2500VA Max. 4000VA
Switching voltage	Max.250VAC,110VDC
Switching current -Standard: -High capacity:	10A(AC,DC) 16A(AC), 10A(DC)
Contact material	Silver Alloy

## CHARACTERISTICS

Insulation resistance	Min. 1000MΩ at 500VDC
Dielectric strength	2500Vrms, between coil and contacts(1 minute) 1000Vrms, between open contacts(1 minute)
Operate time	Approx. 10 ms (at 20°C)
Release time	Approx. 2 ms (at 20°C)
Vibration resistance	10-55Hz at double amplitude of 1.5mm
Shock resistance	Functional: Min. 98m/S <sup>2</sup> (10G) Destruction: Min. 980m/S <sup>2</sup> (100G)
Temperature rise	Max. 65deg. (at nominal voltage)
Ambient temperature	- 40°C to +105°C
Life expectancy -Electrical 1. Standard 2. High capacity -Mechanical	10A 125VAC: 3 x 10 <sup>5</sup> operations (at 20cpm) 16A 125VAC: 1 x 10 <sup>5</sup> operations (at 20cpm) 1 x 10 <sup>7</sup> operations

## COIL SPECIFICATIONS

Nominal voltage (VDC)	Pick-up voltage VDC(Max.)	Drop-out voltage VDC(Min.)	Nominal current (mA±10%)		Coil resistance (Ω±10%)		Power consumption (mW)		Max. allowable voltage (VDC)
			Form A	Form C	Form A	Form C	Form A	Form C	
5	4	0.5	40	80	125	62.5	200	400	130%V of nominal voltage
6	4.8	0.6	33.3	66.7	180	90	200	400	
9	7.2	0.9	22.2	44.4	405	202.5	200	400	
12	9.6	1.2	16.7	33.3	720	360	200	400	
18	14.4	1.8	11.1	22.2	1620	720	200	400	
24	19.2	2.4	8.3	16.7	2880	1440	200	400	
48	38.4	4.8	4.2	8.3	11520	5760	200	400	
100	70	10	6	6	18000	16600	600	610	DC110V

## ORDERING INFORMATION

ME-23 - 24 - Z P S Q (283)

Model No.	Coil Voltage	Contact Form	Contact Capacity	Protection	Terminal type	Ambient temperature
ME-23	3VDC- 100VDC	Nil: 1A Z : 1C	Nil: Standard type (10A) P:High capacity type (16A)	Nil: Flux free type S: Sealed type	Nil: PCB type Q: QC Terminal ( only for 1A & High capacity type 16A)	Nil: - 40°C to +105°C (283):Wide feet, low temperature type.

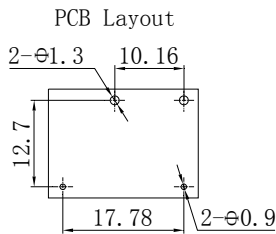
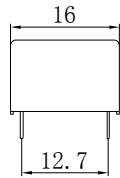
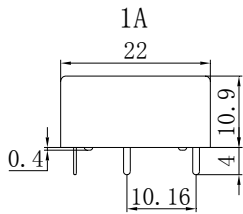
\*\*Note: 16A & 105°C is suitable for 1 form A only.\*\*

(335) : stands for product in accordance to IEC 60335-1(GWT), its cover will change white.

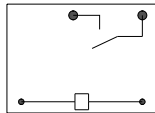
### Dimensions(unit: mm)

#### 1 Form A (PCB) Outline Dimensions

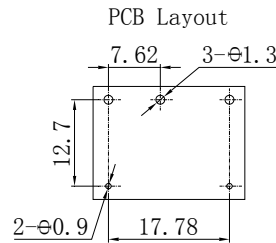
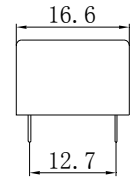
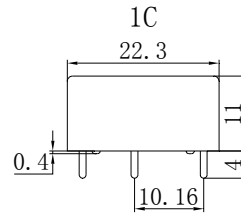
Tolerance±0.5



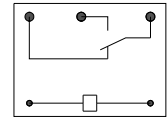
Schematic



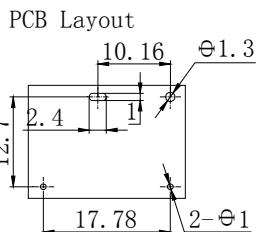
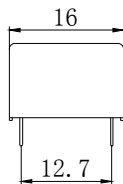
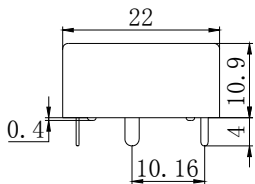
#### 1 Form C (PCB) Outline Dimensions



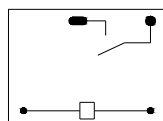
Schematic



1A-283



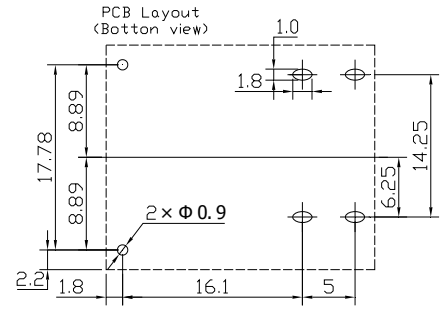
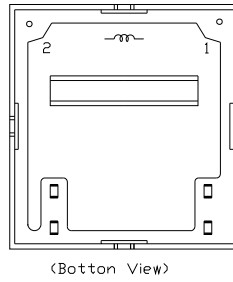
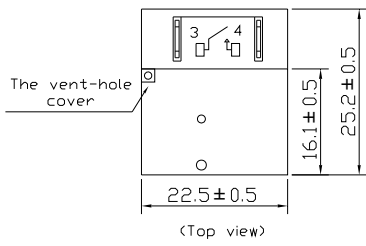
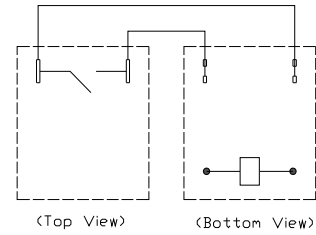
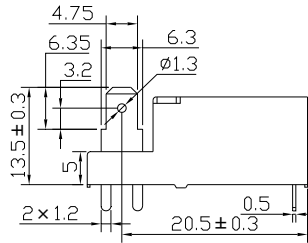
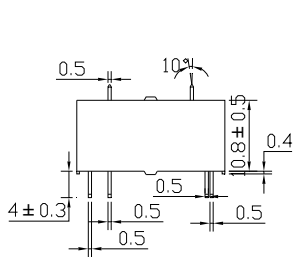
Schematic



1 Form A (QC)

Outline Dimensions

Wiring Diagram



Disclaimer: All the specifications are subject to change without notice.