

## FEATURES

- Low coil power consumption
- 1C, 1U, 2C and 2U configurations
- Small size, light weight
- PCB broad mounting

## CONTACT DATA

Contact form	1C, 2C, 1U & 2U
Contact resistance (Initial)	$\leq 100\text{m}\Omega$
Contact rating (Resistive)	15A, 20A/14VDC inrush current 30A (L/R=7mS;15mS max)
Max. switching power	280W
Max. switching voltage	16VDC
Max. switching current	30A
Contact material	Silver Alloy

## CHARACTERISTICS

Insulation resistance	100M $\Omega$ min (at 500VDC)
Dielectric strength	50Hz 500V, between coil and contacts
	50Hz 500V, between contacts
Operate time	$\leq 10$ ms
Release time	$\leq 5$ ms
Vibration resistance	10-55Hz double amplitude 1.5mm
Shock resistance	100m/s <sup>2</sup> 11ms
Humidity	85% (at 40°C)
Ambient temperature	- 40°C to +105°C
Life expectancy	
- Electrical	10 <sup>5</sup>
- Mechanical	10 <sup>7</sup>

## COIL SPECIFICATIONS

Nominal voltage (VDC)	Pick-up voltage VDC(Max.)	Drop-out voltage VDC(Min.)	Nominal current (mA $\pm 10\%$ )	Coil resistance ( $\Omega \pm 10\%$ )	Power consumption (W)
12	7.3	0.9	57.5	210	0.69
	9.0 (at 80°C)				

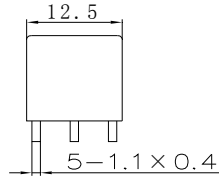
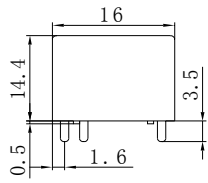
## ORDERING INFORMATION

<u>MC2</u>	-	<u>012</u>	-	<u>1C</u>		<u>S</u>

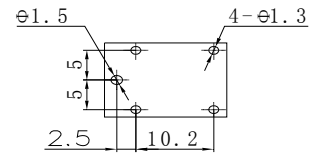
Model No.	Coil Voltage	Contact Form	Protection
MC2	12VDC	1C 1U 2C 2U	Nil: Unsealed S: Sealed

## Dimensions(unit:mm)

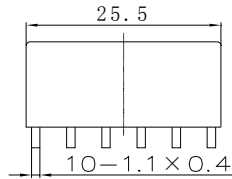
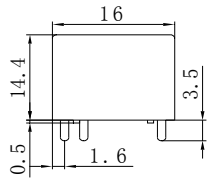
1C&1U



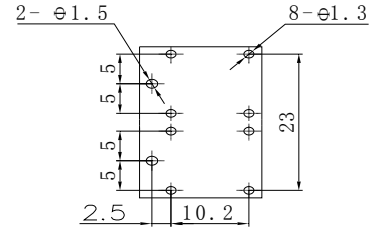
PCB Layout



2C & 2U

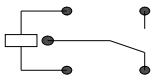


PCB Layout

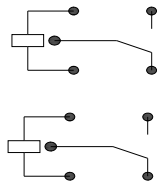


Schematic

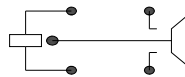
1C



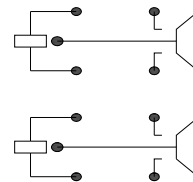
2C



1U



2U



Disclaimer: All the specifications are subject to change without notice.